



ENIWA EYE

<https://eniwa-eye.com>



Flower Point  
Hanafuru

<https://hanafuru.jp/>



Eniwa City migration & settlement support site  
Garden City Life

<https://www.eniwan.org/>



A guidebook to the colorful  
"City of Flowers" Eniwa.



# Explore Eniwa

えにわ



Eniwa City

"Flowers & Green" Tourism Division

061-1498 Kyomachi 1,  
Eniwa, Hokkaido  
TEL 0123-33-3131

Eniwa Tourism Association

Center House, Minami Shimamatsu 828-3,  
Eniwa, Hokkaido  
TEL 0123-21-8900



Eniwa, Hokkaido

Issued in September 2023.

## What sort of place is Eniwa?

A pretty "City of Flowers" where nature & city exist in harmony.

By car it is 46-minutes to Sapporo, the capital city of Hokkaido, and 30-minutes to New Chitose Airport. It is an easy-to-live-in town where nature, symbolized by Mt. Eniwa, and city co-exist seamlessly. It is well known as a beautiful "City of Flowers", where gardening flourishes and continues to evolve under the theme of "Eniwa: Flowers - Water - Green; connecting people & building dreams".



## What's to see in Eniwa?

Enjoy tastefully designed gardens and sightsee along "Eniwa Gorge"

A desire to expand from the circle of citizens who gain pleasure from growing and enjoying flowers to the people who visit the town gave birth to the unique style called "観交" ("Kanko"). The activity "We want to fill our hometown with flowers and greenery", started by seven citizen volunteers, has spread and now Eniwa has become known as one of the leading flower seedling producing areas in Hokkaido. Flower point "Hanafuru", a tourist centre focused on gardens, is where the thoughts and ideas of both citizens and government have gathered. Enjoy seven elaborate gardens tastefully designed by well-known gardeners. For those who want to enjoy nature, we recommend sightseeing along "Eniwa Gorge" up to the foothills of Mt. Eniwa. You can recall things long forgotten while listening to the clear streams in the unspoiled forest. (※P25~)



## The treasures and history of Eniwa

The lifestyle of people brought up by Earth & Water

Eniwa is blessed with fertile lands and water unique to a "river town". The nationally designated historic site "Karinba Ruins" (Koganechuo, Eniwa) reveals that during the Jomon period (about 3,000 years ago) people were already benefiting from them. From the era of hunting, gathering & fishing through cultivated agriculture & dairy farming people have always enjoyed these blessings. Overcoming the adversity of cold regions, they succeeded in growing rice for the first time in Hokkaido. Even today, the blessings of the Earth & Water bring abundant fruits through rice cultivation, arable farming and flower cultivation.



## How about trying out some local Eniwa experiences?

Crop Farming, Dairy Farming, Horse riding

In Eniwa, where agriculture and dairy farming flourish, you can experience rice planting & harvesting, vegetable harvesting and milking cows at farms. A popular menu is the barbecue where you can enjoy vegetables grown with little or no chemical fertilizers and pesticides. How about trying out cooking or produce something with fresh vegetables and milk? If you want to enjoy the nature of Eniwa we recommend horse trekking at a horse riding club where even beginners are welcome. (※P13~)



## A lovely town, well worth visiting at least once!

I moved to Eniwa (from outside Hokkaido) in 2018. Being close to both Sapporo and New Chitose Airport, and with great highway connections to Southern, Eastern & Northern Hokkaido, it is a very convenient place for both visiting home and travelling. The climate is stable making it easy to live in and the typical seasonal Hokkaido scenery is also attractive. You can feel close to nature with the greening around Lake Eniwa in spring and the fantastic reds and yellows of the autumn leaves around the waterfalls. I visit the farmers market "Kanona" often. I enjoy the great selection of locally grown fresh vegetables. When you want to refresh yourself, I recommend the reasonably priced hot springs "Eniwa Onsen Honoka". Opened in November 2020, Hanafuru also boasts vibrant flowers blooming abundantly in spring. Please visit Eniwa; rich in natural beauty and easy to live in!



Ryoichi Hirose  
(orig. Fukuoka Pref.)



Hanasanpo Street



Eniwa Gorge



Lake Eniwa



Farmers Market "Kanona"

## New connections are made through talking.

While a student I travelled around Japan and was touched by the kindness of people and experienced the joy of making connections. That trip was also the trigger to rediscover the good things about my hometown. Flowers and greenery can be seen throughout the city; around Eniwa station, on the sidewalks, everywhere! In spring cherry blossoms, in summer avenues lined with ginkgo trees. It made me nostalgic cycling by gardens with neatly maintained flower beds. I opened a café (Currently closed) in 2017 in Eniwa because of these experiences: a place where anyone would feel welcome and could easily drop in. Not only people who like flowers, but also housewives, students, office workers, and other people gather, talk to each other and create new connections. I hope in the future that this circle will expand even more to include people visiting Eniwa to make it a even better town!



Riho Mizuno  
(orig. Eniwa)



Around Eniwa Station



Hanafuru



# The charms of Eniwa, "City of Flowers"

## Started by its citizens; "City of Flowers" town planning

Eniwa's "City of Flowers Development" has grown from a small citizen driven activity to make a more colourful and beautiful city with flowers. In 1961 seven volunteers established an organization which distributed flower seedlings grown in fields rented from cooperating farmers to elementary and junior high schools in the city. Adding to this, the spirit of gardening (= creating and playing with beauty) has enriched lives of the inhabitants of Eniwa and helped forge new connections between people.



"Hana Ippai" culture organization market (1968.5)



"Green Belt" planting (1977.6)



1st Eniwa Flowers and Daily Living Exhibition (1990.8)



1,000 people flower planting campaign, Megumino(1999.6)



Opening of Hana Road Eniwa(2006.7)



Hydrangea planting at three schools(2018.5)

## From loving flowers, to creating things using them..

In Eniwa, we are focusing our efforts to expand the possibilities of flowers. There are many cafes with gardens and restaurants decorated with flowers, and you can also enjoy unique dishes that are a collaboration of flowers and local ingredients. Various products have also been developed; preserved flowers which maintain the beauty of

flowers for a longer period and herbarium arrangements are popular as interior decorations. In addition to flower scented perfumes, aroma candles and tea, many products such as sweets and accessories with floral motifs and key chains are available. "City of Flowers Development" is expanding to include creating products using flowers.



Seedlings from Eniwa

Shop location  
Farmers Market 'Kanona'



Flower Cookies  
"Hanako"

Shop location  
Roadside rest area 'Hana Road Eniwa'



Herbarium

Shop location  
Flower Studio Living Colours



Rose syrup

Shop location  
Ecorin Village & Roadside rest area 'Hana Road Eniwa'



Rose confiture



Sachiko Suzuki

## I hope that through flowers you can enjoy interacting with people

After finishing raising our children, I started helping my husband with his gardening - this is when I became hooked on gardening. To learn more about flowers I participated in the "Megumino Lovers of Flower Growing Association". While participating in activities such as flower bed maintenance and as a flower guide through the gardens of various parts of the city, the most enjoyable part for me is chatting with people who share a common hobby. When the open garden season begins students visit my garden as part of their class, and it is fun to interact with people that I don't normally meet. When I've been grooming the flowers since morning, some passing children say "Good morning. The flowers are beautiful today", and it makes me happy to think that they remember the flower-loving lady. This joy will further increase if through flowers we can also communicate with visitors to Eniwa.



Ms. Suzuki's garden



Tourists visiting Ms. Suzuki's garden



Miki Tsuchiya

## What's next for the "City of Flowers" Eniwa?

Work started at the family business, Sun Garden, when houses started to be built around "Sapporo Beer Factory" and Megumino areas. At the first "Living with Flowers Exhibition" the venue and residential areas were decorated according to the slogan "Green in the town and flowers in the windows". Driven by the energy of the committee at that time, it was fun to make something together! That experience is one of the driving forces that kept me involved in flower work and civic activities for 30 years. There are many residents of Eniwa who take care of their gardens, plant flowers in the local areas and look after and maintain them. I would take great pride in living in a "City of Flowers" that has been looked after 60 years. The "Flower Point (Hanafuru)", created in 2020, is a culmination of the continuation of the "City of Flowers" and a new start. I hope that future generations will come up with new ideas and good ways to combine living with flowers and flower tourism.



Sun Garden



Ms Tsuchiya participating in local volunteer activities



## Eating out in Eniwa

### "City of Flowers" style Cafés & Restaurants

There are many Farm Restaurants & Garden Cafes in the "City of Flowers". You can have a cup of tea/coffee or a meal on a terrace surrounded by flowers and forests. At the farm restaurants you can enjoy meals made with vegetables picked that morning or freshly made cheese. There are also many cake & sweet shops and bakeries which specialize in using local produce.



#### Cafe Tea's Garden

Enjoy a buffet of vegetables fresh from the farm on the terrace surrounded by flowers. (☎P15~)



#### Tomoe Bagel

Using Hokkaido wheat and natural yeast to make bagels with an irresistible texture. (☎P17~)



#### Sweet Grass

Restaurant in a secluded forest location. Try out the delicious "Omrice"! (☎P26~)



#### cafe Fukuza

Located on the banks of a river in a good spot for bird-watching. Both the food served and the handmade pottery are recommended! (☎P27~)



#### Milk Atelier

A farm restaurant where you can enjoy freshly made mozzarella cheese. (☎P27~)

## Buying souvenirs & gifts

### Popular spots to find "Made in Eniwa" items

On busy days more than 8,000 people visits Eniwa and it's surrounding areas "Kanona", a Farmers Market with local agricultural and livestock products, and "Hana Road Eniwa", a roadside rest area. There is a wide variety of local produce such as vegetables, fruits & flowers and also sweets, pickles, and tofu made by producers and companies based in the city. Particular popular are the dora-yaki & roll cake made using the famous "Ebisu pumpkin" from Eniwa. There are also products made using "Matcha" from our sister city Fujieda (Shizuoka Pref.).



#### Eni-dora

Dorayaki (A Japanese pancake) made by kneading Eniwa's Ebisu pumpkin with dough & cream.



#### Eniwa Roll

A Roll cake made from Ebisu Pumpkin, Sweet potato & matcha from Shizuoka Pref.



#### Sweet Pumpkin

Ebisu Pumpkin Brûlée, fresh cream and sponge in a "Kamameshi" container.



#### Eniwa Grilled mutton

Tender, low-calorie and low-cholesterol lamb marinated with an original sauce.



#### Eniwa Tofu

Made from "Toyomasari soybeans" from Eniwa; it is characterized by its rich flavor and sweetness.

Shop location

Roadside rest area "Hana Road Eniwa"

Shop location

Farmers Market "Kanona"

## Spend 1 day sightseeing around Eniwa!

### Families or couples can enjoy!

For visitors who want to enjoy Eniwa even for just one day, we will recommend & introduce spots in 8 different areas. If you want to enjoy flowers, start from flower point "Hanafuru" and stroll around the Megumino area. You can select an area that suits your purpose, time and means of transportation such as cycling around the cafes and shops in the Kogane area or driving to the Banjiri area to enjoy the forests and waterfalls. (For details see the area guides from page 15~)



#### Banjiri/Makiba Area



#### Shimamatsu Area



#### Megumino Area



#### Eniwa Station Area



#### Kogane Area



#### West Eniwa Area



#### Banjiri/Makiba Area



#### Toiso/South Eniwa Area



#### Suburban Area





## A new symbol for Eniwa, the "City of Flowers"

In November 2020 "Flower Point 'Hanafuru'" was opened. It is a new facility which adds a garden area, Eniwa Family Garden "Lilia" & RV Park to the current roadside rest area "Hana Road Eniwa" and farmers market "Kanona". It is the birth of a new symbol for people of all ages to enjoy.  
 [Add] Minami Shimamatsu 828-3, Eniwa  
 [TEL] 0123-29-6721 (MAP#P18)

### Farmers Market "Kanona"



A farmer's market where you can see the actual producers in person. There are about 500 types of vegetables and flowers available at very reasonable prices. (≠P9)

### Roadside rest area "Hana Road Eniwa"



Promotes Eniwa's appeal points based on the theme "Flowers - Water - Green - Countryside". It's a popular spot with more than 1 million visitors annually. (≠P9)

### Garden Area

Tastefully designed gardens by 7 of Hokkaido's most well known garden designers. As well as admiring the flowers and trees, our wish is that through play everyone can appreciate the richness & changes of nature.

Supervision  
 Company: Takano  
 Landscape Planning  
 Shuichi Murata



For more details...

## Starbucks Coffee Hanafuru Eniwa Branch Eniwa Rice Ball Ebisu



The "Starbucks Coffee Hanafuru Eniwa Branch" opened in December 2021. "Eniwa Rice Ball Ebisu", which opened in March 2022, offers rice produced in Eniwa and is a popular rice ball shop among the locals.

## Eniwa Family Garden "Lilia"



A play area that fosters a child's imagination, understanding, and communication skills. (≠P10)

## RV Park Hana Road Eniwa



This facility is recommended for people touring in Camper Cars etc. (≠P10)

## Eniwa Tourist Information Center



As well as information on sightseeing and events in Eniwa, there are also pamphlets for the surrounding area and gardens in Hokkaido. (≠P30)  
 [Opening Hours] 9am~5pm [Holiday] End of year & New Year Holidays(12/29~1/3) [Tel] 0123-21-8900

## A meeting facility that enriches life

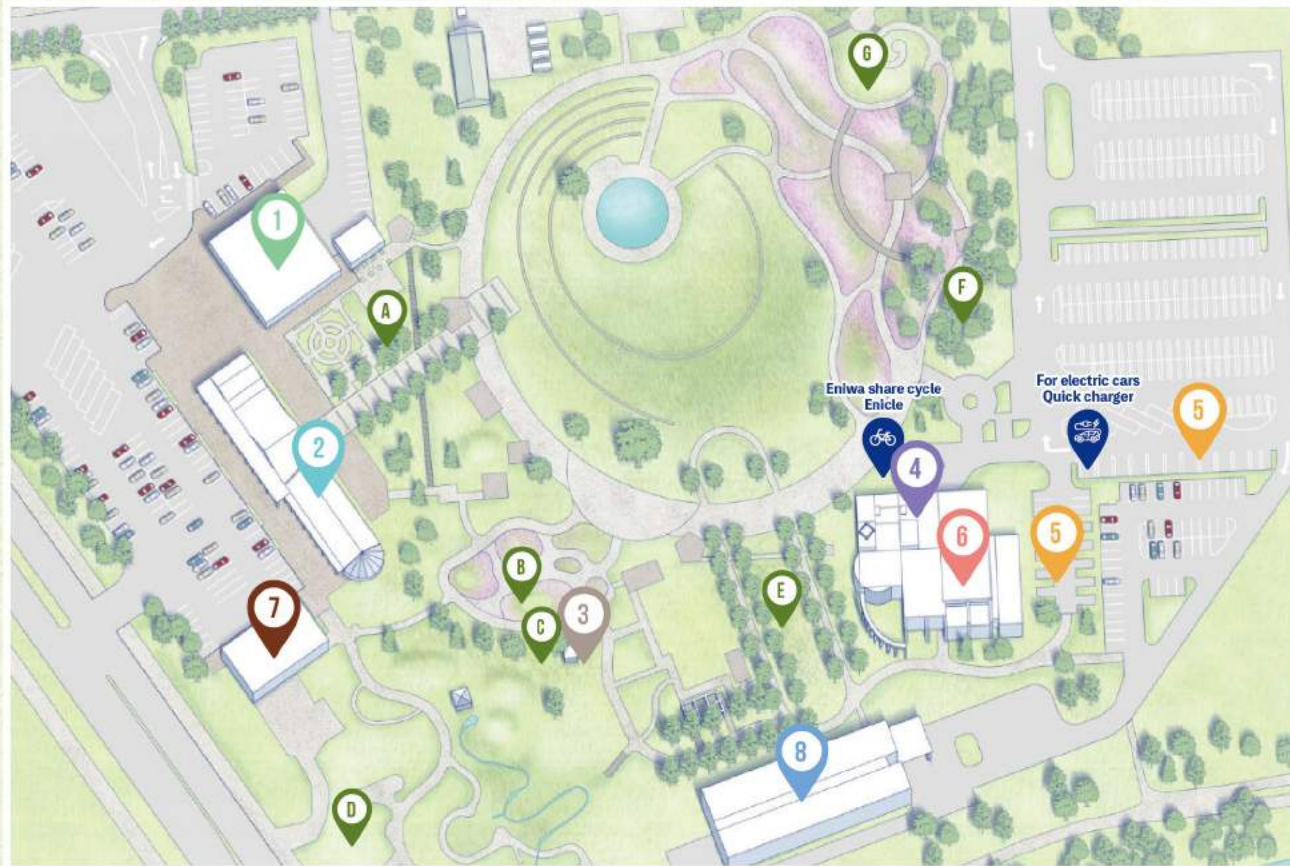


In addition to hosting workshops and cooking classes, you can use it for various purposes, such as movie watching with friends using a large screen monitor.

## Fairfield by Marriott Hokkaido Eniwa



A simple and relaxing hotel with the concept of "Quest for the Unknown Japan," based at the roadside station. (≠P29)



**A Ecorin Village Kitchen Garden**  
 Eco-friendly garden with vegetables, fruits & herbs  
 Company: Aleph  
 Takako Maeno Tsukasa Gotoh



**B Gravel Garden**  
 A collection of plants suited to gravel  
 Company: Ueno Farm  
 Sayuki Ueno



**C Garden Celebrating Life**  
 Suggestions on how to enjoy the garden in daily living  
 Eniwa Flower Masters Council



**D The Playground**  
 Become one with nature in the woods!  
 Tokachi 1,000 Year Forest  
 Midori Shintani Shintaro Sasagawa



**E Picnic & Library Garden**  
 Enjoy as you please; have a picnic, read a book!  
 Company: Kiro Garden Planning Company: Miki Garden Design Office  
 Kazuto Kashiwakura Miki Sato



**F Woodland Wonders**  
 Feel the changes of the seasons while walking the forest path  
 Company: Ikor no mori  
 Mayumi Kitamura Hajime Takabayashi Sachi Tanabe



**G Rainbow Bird**  
 A sunny hillside of flowers & wind  
 Company: Sun Garden  
 Miki Tsuchiya

# Roadside rest area "Hana Road Eniwa"



[Opening Hours] 9:00~18:00(Apr~Oct) 9~17:00(Nov~Mar)  
 [Holiday] End of year & New Year Holidays(12/31~1/2)  
 [Tel] 0123-37-8787



## goasis (TEA Stand)

We offer a varied section of drinks using 6 different types of tea leaves including Tapioca drinks. Enjoy while having a break or talking a walk.

※Last order is 30mins before Closing



## Skillet Curry Konayuki Tonton

Try the specialty, grazed pork "Konayuki Tonton"curry. You can select the volume of rice and spiciness to your taste.

※Last order is 30mins before Closing



## Enipan

You can select around 40 different types of bread including "Enipan" (Plain sliced loaf) all freshly baked here in the store.

※Bakery closes when sold out



## Ra-no

Eniwa's first natural soap dealer. Feel the moisturizing effect of lanolin by hand washing. A selection of gift items which are also popular.



## Hana Road Gifts

This is where you get souvenirs from Eniwa! Sweets made base in the local "Ebisu" pumpkin are very popular. There are also plenty of other gifts from around Hokkaido.



Information Corner



24 Hour Toilet

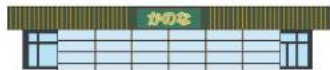


Baby Feeding Diaper Changing Room



Kids' space

# Farmers Market "Kanona"



[Opening Hours] 9:00~17:00(Apr~Jun) 9:00~18:00(Jul~Sep) 9:00~17:00 (Oct~Nov) 10:00~16:00(Dec~Mar) [Holiday]End of year & New Year Holidays (12/29~1/4) [Tel] 0123-36-2700



## A market which connects citizens directly with the producers

There are about 70 local farmers (Mainly from Eniwa) who offer freshly grown vegetables, flowers, edible wild plants and more. Among the nearly 300 types of vegetables there are many rare varieties! In April 2020, it was expanded and now opens all year round.



Vegetables



Fruit



Processed Food



Flower Seedlings



Fertilizer-Seed



Other Items



# Eniwa Family Garden "Lilia"

A new space in Eniwa where children can try out new experiences

A place where you can let your children play indoors & outdoors with peace of mind. It is a great place for children to make friends with many other kids who gather everyday. There are regular event organized for parents and children to participate in - very much appreciated by the people.

[Opening Hours]09:30-16:30 (Last entry at 15:20)  
 [Holiday]End of year & New Year Holidays (12/28~1/3)  
 ※Last weekday of every month.  
 [Tel] 0123-29-6090



Active Area



Ball Pool Area



Baby Area



Role Play Area

Indoors there are of four areas: "Active," "Ball Pool," "Role Play," and "Baby." Bornelund's colorful play-set stimulates children and challenges them to try out things.



## Outdoor Area

You can play on the various playsets as much as you want or just run around on the soft grass. The area is fenced off, so it is very safe for children.



# RV Park Hana Road Eniwa

A relaxing time can be spent among the flowers and greenery

A dedicated area within the park for Camper Cars, etc. A relaxing space among flowers and greenery; at night it's a good spot for gazing at the starry sky. It is fully equipped with a free shower room and kitchen that can be used 24 hours a day and is conveniently located near hot springs, supermarkets, convenience stores and gas stations.



[Opening Hours] 24 Hours Open [Check-in] Arrival Day 12:00~16:45 [Check-out] Next Day~10:00 [Holiday]End of year & New Year Holidays (12/28~1/3) [Tel] 0123-29-6721

Here for more details





## Ecorin Village

"Ecorin Village", a place where you can have a fun day with your family. An ecology-themed garden that emphasizes the importance of the connection between food, agriculture, and the surrounding natural environment. The Galaxy "Ginga" Gardens, which are very popular with garden fans, is like a fairytale world. At "Midori no Makiba" where you can meet cute animals like alpacas and goats, there's a popular show where sheepdogs herd sheep. If you want to enjoy food, try out the "Forest Restaurant Ten-Man" or "Rakudaken". There are plenty of events both parents and children can participate in. (MAP#P26)

[Add] Makiba 277-4, Eniwa [Tel] 0123-34-7800 (Ecorin Village support center)

Prices and business hours are subject to change, so please confirm with the website in advance.

[URL] <http://www.ecorinvillage.com>



Animal Farm "Midori no Makiba"



Forest Restaurant "Ten-Man"



Galaxy "Ginga" Gardens



Sheep Sheep Camping Field

You can meet many types of animals that live in Ecorin Village; alpaca, sheep, llamas, miniature horses & goats. The "Midori no Makiba Show", where sheep dogs guide a flock of sheep, is very popular.

An eco-friendly roof covered with plants. Inside the restaurant, warmed by the sunshine through the skylight, is decorated with interiors imported directly from Britain. You can relax and enjoy the food while admiring seasonal changes of the Galaxy "Ginga" gardens.

An environmentally friendly English style garden that takes advantage of the individual characteristics of each plant. Designed by world-famous British gardener Bunny Guinness. There are many themed gardens with small hills and ponds on the 10ha site, ranging from the traditional to the playful.

A new campsite was opened in 2020. Enjoy camping with your family while watching sheep graze in the nearby meadow.

\*Because of grazing management, sometimes the sheep may not be in neighbouring field.



Rakudaken, pasta and authentic wood-fired oven made pizza

A farm restaurant that boasts pasta made from Italian flour and Neapolitan-style pizza baked in a wood-fired oven. You can also try out menus with "Konayuki TonTon" (our own brand pig grazed here in Ecorin Village). Please enjoy the "Italian mamma" taste using our carefully selected ingredients.



Welcome Center

When first you arrive at Ecorin Village, come here! At the information corner you can get information about events of the day; there is also an open cafe area, nursing room and a toilet. The souvenir corner sells limited edition Ecorin Village products and various Hokkaido specialties.



Tomato Forest

Grown from a single seed this hydroponically grown tomato plant spreads out like a tree with its leaves and branches. Normally only about 20 to 30 tomatoes can be harvested per plant, but here we can produce more than 13,000! In 2013, it was certified as "The world's largest tomato plant".



Garden Center "Hana no Makiba"

We have a large selection of seasonal flower & herb seedlings, pesticide-free rose seedlings and popular succulents. As well as selling pots and other gardening materials, our experienced staff can carefully advise you on how to grow and manage plants.



Tomato flavoured chips



"Konayuki Tonton" Pork Curry



"Konayuki Tonton" Pork Jerky



Ecorin Village Original Tomato Juice



Konayuki Tonton Instant Ramen



Wool Craft Kororin Shima-chan



Tomato Soft Candy



Wool Craft Wooden Sheep



Rose Confiture



Ecorin Village Original Coffee



**Rurumappu Park Golf Course**

Enjoy the beautiful scenery as you play in this vast 54 Hole course.



**Rurumappu Riverside Walk**

Enjoy the seasonal flowers in bloom along this unspoiled nature walk.



**Multi-purpose Lawn Area**

This is a large open grass / lawn space where kids can run around or play soccer & baseball.



**Farm Area**

As well as the municipal farm, you can also experience picking haskap berries, blueberries and harvesting vegetables.



**Art Village Soft Cream Workshop "Lulu"**

The creamy & wide variety of ice creams are very popular. Enjoy the vast scenery while eating & drinking!



**Forest Adventure Eniwa**

This is an outdoor park which takes advantage of nature and spacious grounds to create a thrilling experience; it feels like you are walking & swimming in the air! During winter you can also try out long zip slides, laser tag and snowshoe tours in the snow-covered woods.



**Forest Adventure Eniwa**

Prices and business hours are subject to change. Please confirm beforehand via the website.  
Tel:090-4057-4560  
[URL] <https://fa-eniwa.foret-aventure.jp>



**Rurumappu Nature Park Fureland**

Prices and business hours are subject to change. Please confirm beforehand via the website.  
[URL] <https://www.eniwa-rurumappu.net>



**Have a fun experience in Eniwa!**

In Eniwa, well known for it's agriculture and dairy farming, you can try out various experiences related to these.

In addition to harvesting vegetables and milking cows it is also possible for even beginners to try out horse riding!



**Murakami Farm**

*Feel the importance of life through a dairy farm experience*

Murakami Farm, also well-known as "Takatoshi Farm". Through milking cows, making butter and ice cream from fresh milk, you can feel the importance of food and life through these dairy farming experiences. "Animal Square" where you can interact with many animals and the "Tractor Wagon" that passes the grasslands are also very popular with children.

[Tel] 080-6061-9966  
[Add] Toiso156, Eniwa (MAP#P28)  
[Parking] Available  
[Opening Hours] 10:30~17:00  
[Holiday] Dec~Mar Winter Holiday



**Yogo Farm**

*Enjoy BBQ & Pizza Making!*

Taking particular care about soil preparation we grow and sell about 70 types of vegetables. Between July and October you can experience vegetable harvesting, BBQ & soba noodle making and making pizza with fresh vegetables. As well as freshly picked vegetables, you can also try the rare tomato-flavored ice cream available at our shop.

[Tel] 0123-37-2774  
[Add] Hoi 323, Eniwa (MAP#P27)  
[Parking] Available  
[Opening Hours] Dec~Apr 9:00~16:00  
End of Apr to end of Nov 9:00~18:00  
[Holiday] End of Year & New Year Holidays



**Suzuran Horse Riding Club**

*Even first-timers can try out Horse-Riding!*

Popular with horse racing enthusiasts as it allows you to ride retired racehorses. So that beginners can enjoy this experience, the instructor carefully teaches you how to wear riding boots, how to mount the horse and how to walk. Helmets, boots, safety vests rental, and accident insurance are all free.

[Tel] 0123-36-6386  
[Add] Nishi Shimamatsu 548 (MAP#P16)  
[Parking] Available  
[Opening Hours] 10:30~15:00  
[Holiday] Monday, If Monday is a National Holiday then Tuesday, Dec 31.



**Horse Garden MURANAKA**

*See Eniwa by Horse Trekking!*

Enjoy the scenery from a different perspective, riding on the back of a horse. There are professional guides available to guide the horse and proceed slowly, no need to worry! There are 3 different courses to select from depending on your level: "pastures", "forest" and "river crossing".

[Tel] 090-3890-1171  
[Add] Muranaka Farm, Makiba 152, Eniwa (MAP#P26)  
[Parking] Available  
[Opening Hours] 10:00~17:00  
[Holiday] None





# Alive with Nature & Culture Shimamatsu Area

## PICK UP / Rurumappu Nature Park 01 Fureland



An experiential activity facility where you can enjoy park golf, nature walks, and harvesting experiences on expansive grounds.

[Tel] 0123-37-5333 [Add] Nishi Shimamatsu 275, Eniwa [Parking] Available [Opening Hours] Early Apr ~ Late Nov 8:00~16:00 (Closed during winter) (P13)

## PICK UP / Forest Adventure 02 Eniwa



Forest Adventure's first park in Hokkaido! A nature-friendly outdoor park that uses the surrounding forests.

[Tel] 090-4057-4560 [Add] Rurumappu Nature Park Fureland, Nishi Shimamatsu 275, Eniwa [Parking] Available [Opening Hours] Mid Apr~Late Nov 9:00~15:00, Early Dec ~Early Apr 10:00~14:00 \*Reservation in advance is required [Holiday] Not Fixed (winter: Tuesday, Wednesday, Thursday)

## PICK UP / Art Village 03 Soft Cream Workshop "Lulu"



Our special blend soft serve has a rich flavor with a refreshing aftertaste. Tolu-based donuts and lunch menu items are also popular.

[Tel] 0123-37-5110 [Add] Rurumappu Nature Park Fureland, Nishi Shimamatsu 275, Eniwa [Parking] Available [Opening Hours] Weekdays 11:00~17:30, Sat/Sun/Hol. 10:00~18:00, [Holiday] Monday, 2nd & 4th Tuesday

## PICK UP / Fresh vegetable buffet & dessert 04 Cafe Tea's Garden



The home-grown and locally grown healthy fresh vegetable buffet is very popular! There are more than 10 kinds of homemade seasonal dishes to choose from and also rice and soup are available from the buffet. There is also a wide selection of a la carte items such as parfait ice creams etc.



[Tel] 0120-980-386 [Add] 561-4 Nishi Shimamatsu, Eniwa, inside Sun Garden [Parking] Available [Opening Hours] 10:00~17:00 (Last order at 16:30) [Holiday] Closed in winter from December to March.

## PICK UP / A treasure trove of flower and gardening ideas! 05 SUN GARDEN



Producing more than 500 types of annuals, perennials, flower & vegetable seedlings. There are many flowers and seedlings for visitors to enjoy along the streams and ponds in the garden grounds. There are gardening experts available to advise on how to grow flowers and garden design/layout; so if you like flowers, this is a must-see!

[Tel] 0120-980-386 [Add] Nishi Shimamatsu 561-4, Eniwa [Parking] Available [Opening Hours] 4/1~10/9 9:00~17:00 [Holiday] 9/1~10/9 closed every Thursday.

## PICK UP / Speciality 'Butadon' (Pork Rice Bowl) & handmade soba noodles 06 Sumiyaki Butadon Kukai



Carefully selected Hokkaido pork and home-grown rice "Yumepirika". The soba noodles are homemade "Botan Soba" from Urausu Town. Natural seasonings such as Hokkaido grown additive-free whole soybeans, dried bonito flakes and kelp are used for the sauces. We strive for a safe and delicious taste.

[Tel] 0123-37-1230 [Add] Shimamatsu Kotobukicho 1-10-2, Eniwa [Parking] Available [Opening Hours] Mon, Wed~Fri 11:00~14:30, Sat/Sun 11:00~14:30, 17:00~19:30 [Holiday] Tue.



## PICK UP / Suzuran 07 Riding Club

A horse riding club that even first-timers can enjoy!

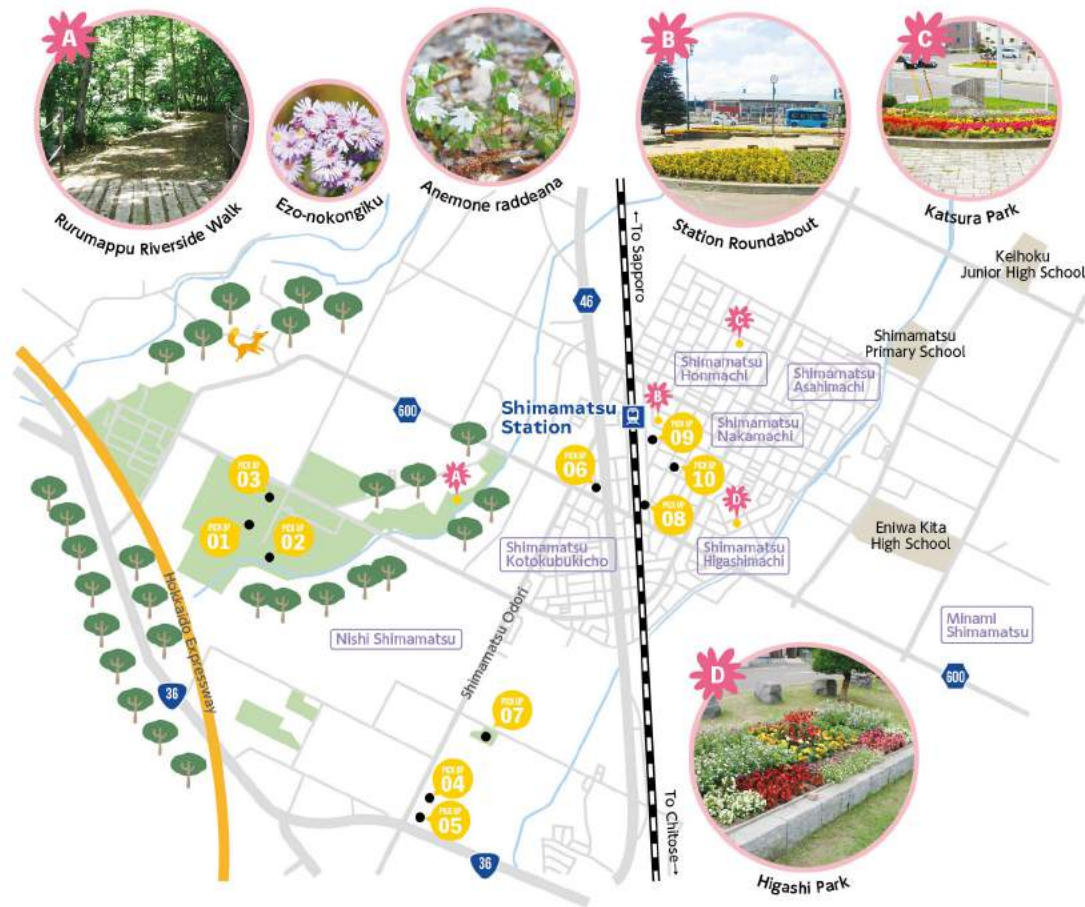
[Tel] 0123-36-6386 [Add] Nishi Shimamatsu 548, Eniwa [Parking] Available [Opening Hours] 10:30~15:00 [Holiday] Mon (When Monday is a National Holiday, Tuesday is a holiday), Dec 31



## PICK UP / Kisoba Goro 08

A long-established soba noodle restaurant in Shimamatsu. There is also a wide selection of udon noodles, don-buri (rice bowls) and set meals.

[Tel] 0123-36-8125 [Add] Shimamatsu Nakamachi 2-1-14, Eniwa [Parking] None (You can use the "JA" parking area) [Opening Hours] 11:30~14:00, 17:00~21:00 [Holiday] Sunday



## PICK UP / 09 Musokan

A historic building in Eniwa, built in 1937. It is commonly used for concerts and art exhibitions. A great place to experience art.

[Tel] 0123-36-6050 [Add] Shimamatsu Nakamachi 1-2-20, Eniwa [Parking] Available [Opening Hours] Event Hall: 9:00~17:00 (Reservations available until 22:00) Cafe: 10:00~17:00 (Last order at 16:30) [Holiday] End of Year and New Year's Holidays



## PICK UP / 10 Kosushi

A restaurant always popular for its reasonable lunch. The "Kosushi Don" with its great taste, volume and impact is highly recommended - but there are only limited amount per day!



[Tel] 0123-36-8717 [Add] Shimamatsu Nakamachi 1-6-13, Eniwa [Parking] Available [Opening Hours] 11:30~13:45, 17:00~20:30 [Holiday] Mondays and Sunday nights

A colourful area where gardeners gather!  
**Megumino Area**

**PICK UP /** A relaxing cafe in Megumino  
**01 Café Orange**



As the name suggests you can relax as if you were at home here. Set course menus, curries, pizzas, gratins, sandwiches; large menu & volume! The daily lunch is highly recommended.



[Tel] 0123-36-3016 [Add] Megumino Nishi 1-7-3, Eniwa [Parking] Available [Opening Hours] 10:00~20:30 [Holiday] Closed on Tuesdays and Wednesdays. Fridays are irregularly closed.

**PICK UP /** Carefully selected high quality coffee  
**03 Coffee Carrot** Megumino Coffee Bean Shop

You can enjoy coffee brewed using the highest quality beans carefully selected by certified international coffee specialist, Daisuke Uchikura. Enjoy a relaxing coffee while admiring the many flowers in bloom in the garden.



[Tel] 0123-36-4561 [Add] Megumino Nishi 1-25-2, Eniwa [Parking] Available [Opening Hours] 10:00~16:30 [Holiday] Wed, Sun

**PICK UP /** Bakery House  
**05 Peacock**



A bakery busy with locals from early morning. The sliced bread with a chewy texture is highly recommended!

[Tel] 0123-37-1361 [Add] Megumino Nishi 6-21-5, Eniwa [Parking] Available [Opening Hours] 6:30~18:00 [Holiday] Wednesday

**PICK UP /** Traditionally baked bagels  
**02 Tomoe Bagel**

Using Hokkaido wheat and natural yeast. We take great care to prepare each bagel by hand using traditional baking methods. Try out one of our bagels with an irresistible texture and great taste!



[Tel] 0123-21-9129 [Add] Megumino Nishi 2-2-12, Eniwa [Parking] Available [Opening Hours] 11:00~17:00 [Holiday] None



**PICK UP /** Gifts & Daily Goods Shop  
**04 "Tebukuro"**



Many, many gifts and crafts etc. selected by the staff. It's like a toy box turned upside down!



[Tel] 0123-36-3957 [Add] Megumino Nishi 1-23-4, Eniwa [Parking] Available [Opening Hours] 10:00~18:00 [Holiday] Wednesday

**PICK UP /** Cake House  
**06 POMME**



A cake shop that has been loved by the people of Eniwa for a long time. The delicate taste from its founding make it very popular!



[Tel] 0123-36-3767 [Add] Megumino Nishi 5-1-8, Eniwa [Parking] Available [Opening Hours] 10:30~18:00 [Holiday] Monday & Tuesday

**PICK UP /**  
**07 JAZZ CAFE TOSSY**

Enjoy the jazz music while having a coffee. Also try out the jazz curry!!

[Tel] 0123-37-0283 [Add] Megumino Minami 4-12-3, Eniwa [Parking] Available [Opening Hours] 11:00~16:00 [Holiday] Tuesday & Wednesday



**PICK UP /** Megumino  
**08 Central Park**

A spacious and undulating park located in the center of Megumino. The park has a library, baseball field, tennis courts and an outdoor concert area. In spring enjoy a walk while viewing the cherry blossoms; in the summer there are baseball and tennis events and in the autumn there is a music festival. In winter sledding & cross country skiing are recommended.



[Tel] 0123-29-4836 [Add] Megumino Kita 3-9, Eniwa [Parking] Available [Facilities] Toilet is closed from Nov~Mar



**PICK UP /**  
**09 Eniwa City Historical Museum**



The origins and history of Eniwa are told by theme in 6 exhibition rooms.  
 [Tel] 0123-37-1288 [Add] Minami Shimamatsu 157-2, Eniwa [Parking] Available [Opening Hours] 9:30~17:00 [Holiday] Monday, Day following a national holiday, Last Friday of every month, End of Year and New Year's holidays

**PICK UP /**  
**10 Flower Point "Hanafuru"**



Centered around a vast garden area, this tourist spot offers various attractions including the roadside and river station "Hana Road Eniwa", the agricultural and livestock direct sales outlet "Kanona", a children's playground, RV park, and more.  
 (P7~10)

[Add] Minami Shimamatsu 828-3, Eniwa

The front door to Eniwa, many unique shops!  
**Eniwa Station Area**

**PICK UP 01** Enjoy authentic Italian cuisine at an affordable price  
**Italian Cuisine IL PLANETARIO**



Enjoy authentic Italian cuisine at an affordable price Italian Cuisine IL PLANETARIO. A restaurant serving authentic Italian dishes that everyone from children to adults can enjoy casually. The chef, with 20 years of experience in Italian cuisine, prepares a truly exquisite Pescatore. Enjoy a special lunch and a sophisticated dinner, indulging in moments of luxury.

[Tel] 0123-25-9988 [Add] 1-2 Sakaemachi, Eniwa, Residence Alpha 1F [Parking] Available (3 spots) [Opening Hours] Lunch 11:30~15:00 (Last order 14:30) Dinner 18:30~22:00 (Last order 21:00) [Holiday] Mondays ※if it's a public holiday, the next day (irregular holidays possible)



**PICK UP 03** Old-style traditional Ramen  
**Eniwa Oton Shokudo**

The standard menu is "Kobato Ramen", a chicken-based clear soya soup. Thin ramen noodles topped with pork, green onions, spinach and a boiled egg. This old-fashioned taste is very popular with the locals.



[Tel] 0123-32-2251 [Add] Izarimachi 13, Eniwa [Parking] Available [Opening Hours] Weekdays: 11:00~15:00 Sat/Sun/Hol: 11:00~17:30 [Holiday] Tuesday

**PICK UP 05** Enimarche (エニマルシェ)



An antenna shop in Eniwa located in a building directly connected to JR Eniwa Station. In addition to specialty products made with ingredients from Eniwa, such as sweets, the adjoining "Nomu Gelato Coffee" offers a drinkable gelato made from certified pasteurized milk from Eniwa. Highly recommended!



[Tel] 0123-33-3801 [Add] 1-8-1 Aioimachi, Eniwa, Izarie 3F [Parking] Paid parking available [Opening Hours] 10:00~17:00 [Holiday] Sunday, Monday, Tuesday

**PICK UP 02** A Cafe where you can relax  
**Kawara Soba & Mikan Nabe "Fiesta"**



Whether it is Kawara Soba, Mikan Nabe or Homemade Hamburgers, Japanese or Western Style, the owner pursues "Deliciousness" for all dishes! The only place in Hokkaido where you can get "Mikan Nabe"!!



[Tel] 0123-25-6970 [Add] Izarimachi 104-2, Eniwa [Parking] Available [Opening Hours] Weekdays: 11:00~15:00-18:00~22:00. Sat/Hol: 11:00~22:00 Sun: 11:00~17:00. [Holiday] Monday

**PICK UP 04** Handmade Soba  
**Shikunro Main Shop**



Thick, short & chewy soba noodles are well known for their strong soba flour flavor. Visited by Soba Noodles lovers from all over Japan.

[Tel] 0123-32-3059 [Add] Motomachi 53, Eniwa [Parking] Available [Opening Hours] 11:00~19:00 (Monday 11:00~14:00) ※Or when sold out [Holiday] Tuesday

**PICK UP 06** Noodle Shop  
**Kawahara**



They take pride in the taste of their dashi soup, the simple salt based soup ramen is very popular. Check out the dashi stock vending machine in front of the store!

[Tel] 0123-21-9487 [Add] Sakaemachi 74, Eniwa [Parking] Not available [Opening Hours] Tue~Sun & Holidays 11:00~14:30, 17:00 until soup runs out. [Holiday] Monday (Open on National Holidays)

**PICK UP 07** Shake-yaki Honpo

Ever popular Shake-yaki store. Salmon shaped casing filled with soya bean paste from the Tokachi region of Hokkaido. There are a selection of flavors to choose from: cream, chocolate, curry as well as seasonal ones!

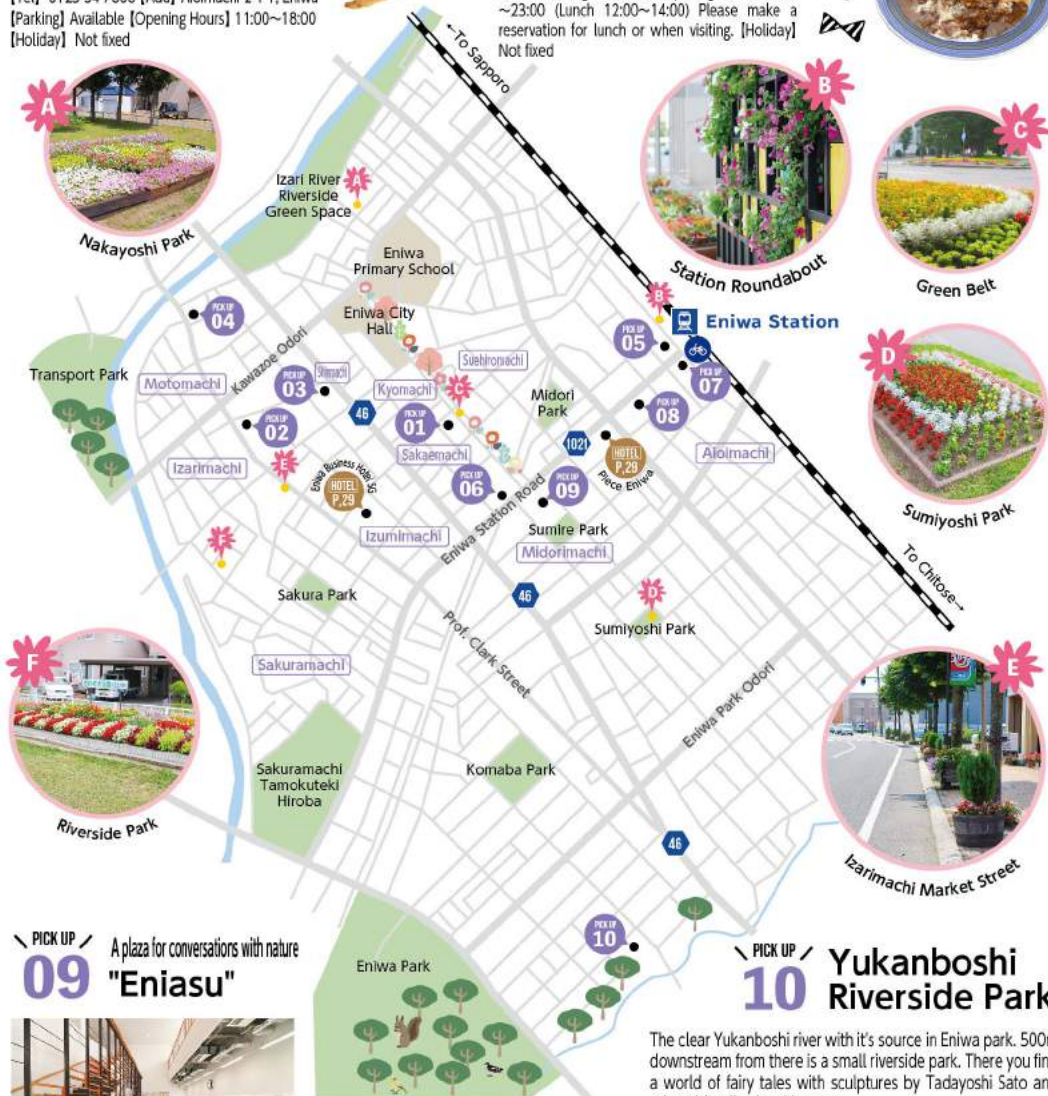
[Tel] 0123-34-7666 [Add] Aioimachi 2-1-1, Eniwa [Parking] Available [Opening Hours] 11:00~18:00 [Holiday] Not fixed



**PICK UP 08** Mojo Hand

A café shop which serves omelette rice, curry & pasta. It is also a popular and well-known live music venue. Maybe you can meet a famous musician!

[Tel] 0123-33-4447 [Add] Aioimachi 2-3-28, Eniwa [Parking] Available [Opening Hours] 11:00~23:00 (Lunch 12:00~14:00) Please make a reservation for lunch or when visiting. [Holiday] Not fixed



**PICK UP 09** A plaza for conversations with nature  
**"Eniasu"**



A facility that combines community resources such as a library and school children's club with private functions such as convenience stores and sports clubs. The FM Radio station also broadcasts from here!

[Tel] 0123-34-8167 [Add] Midorimachi 2-1-1, Eniwa [Parking] Available [Opening Hours] 9:00~22:00 [Holiday] End of year & New Year Holidays (12/29~1/3)

**PICK UP 10** Yukanboshi Riverside Park

The clear Yukanboshi river with its source in Eniwa park. 500m downstream from there is a small riverside park. There you find a world of fairy tales with sculptures by Tadayoshi Sato and others blending in with nature.



[Add] Komabacho 5-657-1, Eniwa [Parking] Available [Opening Hours] Closed at night and during the winter [TEL] 0123-29-4836

Bustling with stylish restaurants and cafés  
**Kogane Area**

**PICK UP** 01 A very popular curry made with local Eniwa ingredients  
**Curry House A-Kitchen**



The spicy Western-style curry is recommended. The local brand egg "Ki no Megumi" is used for the popular omelet cheese and omelet cutlet curry. Also available are a sweet curry for children and half-sized portions for ladies.

[Tel] 0123-33-8844 [Add] Kogane Chuo 1-2-8, Eniwa [Parking] Available [Opening Hours] 11:00~15:00-16:30~21:00\*Or when sold out of curry! [Holiday] Monday

**PICK UP** 02 Excellent Gelato made from the best "Pasture-grazed" milk  
**Gelateria Gigi**



First Ice cream store in Japan to obtain "pasture-grazed certification"! An Italian gelato specialty shop that specializes in "Pasture-grazed" milk. Gelato, which can be enjoyed all year round, can also be delivered within Japan.

[Tel] 0123-21-9915 [Add] Kogane Minami 2-19-8, Eniwa [Parking] Available [Opening Hours] Weekdays 11:00~17:30 Sat/Sun/Hol. 11:00~18:00 \*Or when sold out! [Holiday] Monday & 2nd Tuesday of each month

**PICK UP** 03 Pizzeria e Trattoria  
**CERVO**

Authentic pizza recognized by the Napolitan Pizza Association in Italy. Only at Cervo can you enjoy such a wide selection of dishes from locally selected vegetables and seafood from Hokkaido and in particular the Eniwa area.

[Tel] 0123-34-6301 [Add] Kogane Minami 2-19-7, Eniwa [Parking] Available [Opening Hours] 11:30~14:00 (Last order at 13:30) Sat, Sun & Holidays 11:00~14:00 Dinner 17:30~20:30 (Last order at 19:30) [Holiday] Monday & Tuesday

**PICK UP** 05 Mimosa Garden & Café La liberté



The owner (a former pharmacist) is very particular in using additive/pesticide free ingredients in his healthy menu. There are also unusual dishes which combine aroma and Chinese medicine "Kanpo".

[Tel] 0123-25-8028 [Add] Kogane Minami 4-11-16, Eniwa [Parking] Available [Opening Hours] 11:00~18:00 (Last order at 17:30) [Holiday] Tuesday

**PICK UP** 04 Bakery  
**Kyara Liaison**



A bakery that uses 100% Hokkaido flour and does not use additives. Salted bread and "oyaki" are popular.

[Tel] 0123-25-3339 [Add] Kogane Minami 1-17-22, Eniwa [Parking] Available [Opening Hours] 9:00~15:00 [Holiday] Monday, 1st & 3rd Sunday of each month

**PICK UP** 06 Eniwa Furusato Park



Located near JR Eniwa Station, this relaxing space was updated in 2022 with a new cafe and play equipment. During summer, the lush park is adorned with quiet flowing water channels. A fountain graces the park's center, bringing a cool breeze carrying the scent of herbs, soothing the soul.

[Tel] 0123-29-4836 [Add] 4-2 Kogane Chuo, Eniwa [Parking] Available

**PICK UP** 07 imoimo ~Baked Sweet Potato & Drink~



A mobile sales trailer selling "Baked Sweet Potato & Drink". The carefully baked sweet potatoes are as sweet as desserts. They often move locations, so check their Instagram for the current location before visiting!

[Add] 4-10-2 Kogane Chuo, Eniwa [Parking] Available [Opening Hours] 9:00~18:00 \*Ends when baked sweet potatoes are sold out [Holiday] Thursday

**PICK UP** 08 CAFÉ Dining Hall  
**KIZUNA**



A restaurant where you can enjoy dishes made with ingredients primarily sourced from Eniwa and other localities in Hokkaido, as well as popular desserts crafted by a master who trained in Kyoto. Highly recommended is the latte art, which has won first place in a free-pour latte art competition in Japan.

[Tel] 0123-34-2218 [Add] 4-3-11 Kogane Chuo, Eniwa City [Parking] Available [Opening Hours] Mon, Wed~Fri, Holidays & the day before Holidays 11:30~20:00, Sunday 11:30~15:00 [Holiday] Tuesday



**PICK UP** 09 Donuts Chaya  
**Honwaka**

Donuts made with Hokkaido flour. A light taste that fills your mouth!

[Tel] 0123-25-5346 [Add] Kogane Minami 7-18-4, Eniwa [Parking] Available [Opening Hours] 11:00~17:00 \*Or when sold out! [Holiday] Not fixed

**PICK UP** 10 Café  
**Midi Lune**

You can feel at home in the woody atmosphere of this café. Please enjoy the homemade cakes and coffee, as well as pasta and curry.

[Add] Kogane Minami 3-10-16, Eniwa [Parking] Available [Opening Hours] Tue~Sat 10:30~20:45 Sun 10:30~20:00 [Holiday] Monday, End of year & New Year Holidays(12/31~1/3)

# Enjoy the Gourmet! Eniwa West Area

## PICK UP / Stylish, Original & great Hospitality 01 Kaiseki Andantei



Kaiseki cuisine with surprising & unique ideas. We carefully select ingredients and skillfully use techniques to bring out the taste and create delicate tasting and delicious dishes. You can also enjoy kaiseki cuisine lunch courses.

[Tel] 0123-34-0292 [Add] Hakuyocho 3-11-5, Eniwa [Parking] Available [Opening] 11:30~14:30-17:30~22:30 [Holiday] Wednesday

## PICK UP / Specialty fresh seafood and processed food store 02 Eniwa Takahashi



A fish shop that offers delicious sashimi prepared from fresh fish procured from inside and outside of Hokkaido. We can also offer assortment/mix of sashimi to meet to your request. There is also a wide selection of processed products available.

[Tel] 0123-33-6213 [Add] Ariakecho 4-1-1, Eniwa [Parking] Available [Opening] 11:00~19:00 [Holiday] Monday

## PICK UP / Connect with your loved one with flowers and sweets 03 ICHIE Flower & Sweets



Let's make the anniversaries in daily life more important. With that in mind, we suggest the custom of "giving" flowers and sweets. Share a special moment with your loved one with exquisite sweets made by pastry chefs who have refined their skills in France.



[Tel] 0120-022-412 [Add] Kashiwagicho 3-1-6, Eniwa [Parking] Available [Opening] 10:00~19:00 (Last order at 18:00) [Holiday] Mondays & Tuesdays (every week) \*Starting from October 2023

## PICK UP / Flower Studio 05 Living Colours



Order made fresh & preserved flower arrangements, bouquets as well as wedding bouquets, etc. The flower arrangement classes are also very popular.

[Tel] 0123-33-7088 [Add] Misakino 2-1-3, Eniwa [Parking] Available [Opening] 10:00~17:00 [Holiday] Saturday, Sunday & National Holidays

## PICK UP / Enjoy the great tasting "Kamameshi" made from delicious rice from Eniwa and the best ingredients from Hokkaido's seas and mountains. 04 ICHIE Seasonal "Kamameshi" dishes



Kamameshi made with seasonal ingredients from Hokkaido. Lunch and dinner menus are available. There are small private rooms and banquet halls to accommodate small & large groups.

[Tel] 0120-036-151 [Add] Kashiwagicho 3-3-2, Eniwa [Parking] Available [Opening] Lunch: Weekdays 11:00~14:00, Weekends & Holidays 11:00~14:30 Dinner: Weekdays 17:00~20:30, Weekends & Holidays 17:00~21:00 [Holiday] Tuesday & the 2nd and 4th Mondays

## PICK UP / \* 06 Suparu Berry



"Tochiotome" strawberry variety grown in a clean environment using the latest technology. Enjoy the original taste of these unbeatably sweet strawberries.

[Tel] 090-8899-1541 [Add] Kashiwagicho 2-2-44, Eniwa [Parking] Available [Opening] 10:00~15:00 (Winter Only) [Holiday] Sunday, Monday

## PICK UP / 07 Shiundai Koushido Treasure Museum



It houses valuable historical antiques and works of art that have been collected in Japan and Asia.

[Tel] 0123-32-3438 [Add] Kashiwagicho 435, Eniwa [Parking] Available [Opening] 9:00~17:00 \*Reservation required a day in advance



## PICK UP / 09 Moizari River Sesaragi Waterway

During "Furusato River Model Project," soil was laid on the bottom of the river, then stones and planted willows at the water's edge. In early summer, the flowers of "Baikamo" (Plum blossom algae/Water buttercup) are pretty.

[Add] Saiwaicho Kashiwagicho, Eniwa [Parking] Available (Saiwai Park)



## PICK UP / 10 Saiwai Park

You can take a leisurely stroll along the lush Moizari River while admiring the "Baikamo", lavender, and hollyhock that bloom in the pure water.

[Tel] 0123-29-4836 [Add] Saiwaicho 1-826, Eniwa [Parking] Available [Facility] During winter season (Nov~Mar) the toilet is closed.



## PICK UP / 08 Cocolo Bakery Smile

Baked from a dough made from Hokkaido butter and flour, this bread is very popular!

[Tel] 0123-32-1630 [Add] Hakuyocho 3-11-19, Eniwa [Parking] Available [Opening] 9:00~18:00 \*Or when sold out! [Holiday] Sunday, Monday



## PICK UP / 11 NOODLE BAR 9

A rich ramen soup with homemade noodles. At night you can enjoy a drink at the bar.

[Tel] 0123-21-9979 [Add] Omachi 2-2-20, Eniwa [Parking] Available [Opening Hours] Tue/Wed/Thu 11:00~15:00-Fri/Sat/Sun 11:00~15:00-18:00~24:00 [Holiday] Monday



# Soothed by forests and water Banjiri · Makiba Area

## PICK UP / 01 Hakusen Falls

Hakusen Waterfalls (height 15m, width 18m) gets its name from the fan shape appearance it creates as it gracefully flows downwards. When the surrounding trees change color in autumn, the color of the waterfall becomes even more prominent against the backdrop of the surrounding red and yellow leaves; it becomes a pure white figure. Be impressed as nature creates art!

[Tel] 0123-33-3131 [Add] Banjiri, Eniwa [Parking] Available  
[Facilities] During winter season (11/4~4/28) the toilet is closed.



## PICK UP / 02 Rarumanai Falls

The way the water seems to crawl along the river bed and fall perfectly following the shape of the rocks makes it seem like a garden in the gorge.

[Tel] 0123-33-3131 [Add] Banjiri, Eniwa [Parking] Available  
[Facilities] Toilet open year round



## PICK UP / 03 Sandan Falls



As the name suggests ("Sandan" = Three steps), it looks like a white obi (belt) runs down in three steps and breaks through Eniwa Gorge. There is an old legend that says the treasure of Minamoto no Yoshitsune lies hidden in this remote area called 'Kuma no Sawa'.

[Tel] 0123-33-3131 [Add] Banjiri, Eniwa [Parking] Not available



## PICK UP / 07 Ecorin Village

A garden that promotes the importance of the connection between food, agriculture, and the surrounding natural environment. It features various themed garden areas, a playground, a farm where you can meet alpacas, llamas, goats, as well as a restaurant and a campground. It's an ecology-themed garden designed for families to enjoy together. (※P11~)

[Tel] 0123-34-7800 [Add] Makiba 277-4, Eniwa [Parking] Available



## PICK UP / 08 Horse Garden MURANAKA



It is a horse ranch specializing in outdoor riding where you can enjoy the changing seasons of Hokkaido's vast nature on horseback.

[Tel] 090-3890-1171 [Add] Muranaka Farm, Makiba 152, Eniwa [Parking] Available [Opening Hours] 10:00~17:00 (Last Start 16:00) [Holidays] None



## PICK UP / 09 Café de Vale

A café popular with ladies who enjoy homemade cooking. The one-plate lunch of fresh vegetables from the garden is recommended.

[Tel] 090-6696-7989 [Add] Misakino 2-11-8, Eniwa [Parking] Available [Opening Hours] 11:00~16:00 [Holidays] Monday & Sunday



## PICK UP / 04 Midori no furusato forest Park

In the vast 37.8ha park, there is an athletic obstacle course for children to play and a 4km nature observation walk.

[Tel] 0123-33-0401 [Add] Banjiri, Eniwa [Parking] Available [Facilities] 4/29~11/3 9:00~17:00

## PICK UP / 05 Izarigawa Dam



A multipurpose dam built to manage the Izari River, the largest tributary of the Chitose River in the Ishikari River system. It creates an artificial lake that supports the life of Eniwa and changes its face with the seasons.

[Tel] 0123-33-7107 [Add] Izaridaira, Eniwa [Parking] Available [Facilities] 8:30~17:15



## PICK UP / 06 Lake Eniwa Sakura Park

In 1982, 3,000 Eniwa residents planted about 1,000 cherry trees to make Eniwa Lake a more pleasant place to visit and relax. Around May of each year it is crowded with many visitors viewing the cherry blossoms.

[Tel] 0123-33-3131 [Add] Banjiri, Eniwa [Parking] Available [Facilities] 4/29~11/3 Until Sunset. Use of fire is prohibited!

## PICK UP / 10 Lake Eniwa Jiyu Plaza



It is a large lawn area of about 30,000m<sup>2</sup> that spreads below the Izarigawa Dam. Amongst the Cherry, Birch & Maple trees there are benches, pergolas and barbecue area. You can enjoy barbecue and day camping.

[Tel] 0123-33-3131 [Add] Banjiri, Eniwa [Parking] Available [Facilities] 4/29~11/3 09:00~17:00 camping in tents and similar activities are prohibited.

## PICK UP / 11 A restaurant surrounded by flowers and forests Sweet Grass



A quiet western-style restaurant surrounded by flowers and forests. The fluffy omelette rice, which uses three locally produced eggs from Eniwa and the chef's special curry and pasta are exquisite. There are also terrace seats surrounded by colorful flowers.



[Tel] 0123-32-0418 [Add] Banjiri 20-1, Eniwa [Parking] Available [Opening Hours] 11:00~16:00 [Holidays] Wednesday

# Lots of experiences to try out! Toiso · Enami · Suburban Areas

## PICK UP / 01 Yogo Farm

A "JGAP" certified farm that has food safety and environmental conservation as its top priorities. There are vegetables, handmade miso & tofu and products made using tomatoes available for purchase at the on-farm shop. In addition to harvesting, making pizza & tofu, and making soba noodles the barbecue is also very popular.



[Tel] 0123-37-2774 [Add] Hoel 323, Eniwa [Parking] Available [Opening Hours] February~April 09:00~16:00, End of April~November 09:00~18:00 [Holiday] End of Year & New Year's Holiday



## PICK UP / 02 cafe Fukuza



Wild birds gather by this cafe on the banks of the Yukunboshi River. Enjoy the carefully selected coffee, ingredients and dishes that are served in handmade pottery. We also sell wooden furniture directly imported from Bali, foreign miscellaneous goods, and one-of-a-kind works by artists.

[Tel] 0123-32-0293 [Add] Enami 6-12, Eniwa [Parking] Available [Opening Hours] 10:00~17:00 (Mon~16:00) [Holiday] 1st Monday of each month



## PICK UP / 03 Fresh homemade mozzarella and pizza Milk Atelier Terada Farm



Dairy Farm run restaurant. Cheese made from high fat content milk is rich & creamy, characterized by a light sweetness and smooth texture; and goes perfectly with pizza dough.

[Tel] 050-5486-8232 [Add] Enami 28, Eniwa [Parking] Available [Opening Hours] 11:00~16:00 (Last order at 15:30) [Holiday] Wednesday



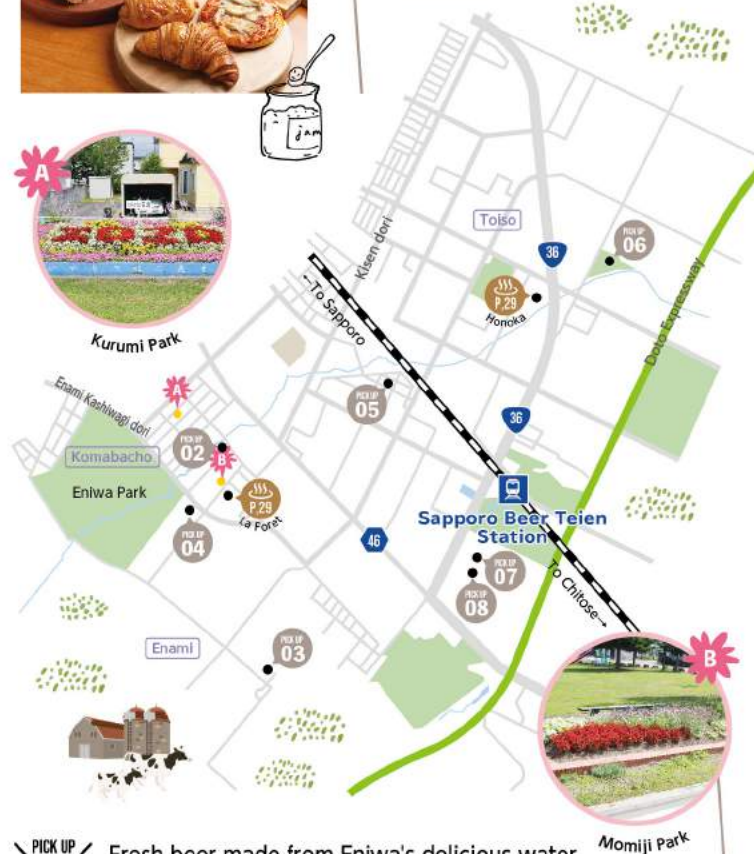
## PICK UP / 04 Baker's Terrace 689

A selection of breads & sweets made from Hokkaido ingredients. Try out the popular Parfait ice-cream at the eat-in area.

[Tel] 0123-33-1970 [Add] Enami 6-89, Eniwa [Parking] Available [Opening Hours] 9:30~18:00 [Holiday] Sunday, Monday



Kurumi Park



## PICK UP / 05 Handmade sweets Amai Aozora



A popular shop which sells baked sweets & cookies and home-roasted coffee. The "Haskap cookies" made from home-grown haskap berries are perfect as souvenirs.

[Tel] 0123-25-8844 [Add] Wakocho 5-20-10, Eniwa [Parking] Available [Opening Hours] 10:00~18:00 [Holiday] Tuesday



## PICK UP / 06 Dairy Farming Experience Murakami Farm



As well as milking cows and feeding the calves, you can try out butter & ice cream making from fresh milk. It is also possible to stay at a farm and experience actual dairy farm work. We also sell milk, dairy products, and sweets.

[Tel] 080-6061-9966 [Add] Toiso 156, Eniwa [Parking] Available [Opening Hours] 10:30~17:00 [Holiday] Dec~Mar Closed during winter

## PICK UP / 07 Restaurant Valhalla



You can enjoy freshly brewed beer and the Hokkaido specialty "Grilled mutton" while looking out at the beautiful gardens. In addition to raw lamb, we also offer our specially seasoned lamb (soy sauce, miso and salt flavors).

[Tel] 0123-33-1740 [Add] Sapporo Beer Hokkaido Factory, Toiso 542-1, Eniwa [Parking] Available [Opening Hours] Everyday 11:00~20:00 (Last order at 19:30) [Holiday] Tuesdays, End of year & New Year Holidays

## PICK UP / 08 Fresh beer made from Eniwa's delicious water Sapporo Beer Hokkaido Factory



Beer factory standing in the land of Hokkaido. You can tour the manufacturing process of "Sapporo Black Label" & "Sapporo Classic" beers and taste them! There is also a "Biotope garden", a "park golf course" and the restaurant "Valhalla" to enjoy.

[Tel] 0123-32-5802 [Add] Toiso 542-1, Eniwa [Parking] Available [Tour Times] 10:30, 11:00, 13:00, 15:00 [Holiday] Mondays and Tuesdays (or the next day if it's a public holiday), End of year & New Year Holidays, and occasional special closure days.





# Take a break Eniwa?

## Fairfield by Marriott Hokkaido Eniwa

The base for your journey in Eniwa! Adjacent to the Roadside Station "Hana Road Eniwa."

The "Trip Base Roadside Station Project" is a collaboration between Marriott International and Sekisui House. This hotel, designed for simple and relaxed stays, serves as a base at the roadside station for the concept of "Quest for the Unknown Japan."

[Tel.] 0123-29-6250

[Add] 828-9 Minami Shimamatsu, Eniwa

[Parking] Available [Payment] Cash or Credit Card

[Reservation] Required [Check-in] 15:00 [Check-out] 11:00

[WEB] <https://www.marriott.co.jp/hotels/travel/ctsf-fairfield-hokkaido-eniwa/>



## Eniwa Station Hotel

A business hotel which also has Japanese-style rooms adjacent to JR Eniwa station

A business hotel with 46 rooms, adjacent to JR Eniwa Station. In addition to single rooms and twin rooms (both Western-style rooms), there are also full-scale Japanese-style rooms. Please enjoy a relaxing & comfortable stay.



[Tel] 0123-34-2400 [Add] Kogane Chuo 2-1-5, Eniwa

[Parking] Available [Payment] Cash, Credit Card or QR Code

[Reservation] Required [Check-in] 15:00 [Check-out] 10:00

[WEB] <http://www.esth.jp/>



## Piece Eniwa

Safe and secure automated self check-in

An "Smart" unmanned hotel that is very easy to use. Self check-in using a tablet device is simple. The hotel is in a good location within walking distance of a convenience store!



[Tel] 0120-949-484

[Add] Midorimachi 2-3-10, Eniwa [Parking] Available

[Payment] Pre-paid [Reservation] Required

[Check-in] 15:00 [Check-out] 10:00



## Eniwa Business Hotel SG

Convenient business hotel located in the center of Eniwa

We have a selection of rooms to meet your requirements: single sized ~ family rooms.



[Tel] 0123-33-5611 [Add] Izumimachi 111-1, Eniwa

[Parking] Reservation required, limited spaces available

[Payment] Cash, credit cards, electronic money

[Reservation] Required [Check-in] 16:00 (until 22:00)

[Check-out] 10:00 [WEB] <http://hotelsg.com/index.html/>



## Kashiwagi Area Recreational Facility

A campsite that can be used for free! Day camping & barbecue OK!

It is well known as one of the best spots for autumn leaves in Eniwa and is busy with many autumn leaves gatherers during that season.



[Tel] 0123-29-4836

[Add] Kashiwagicho 672, Eniwa [Parking] Available

[Season] Mid May~30th Sep [Opening Hours] 13:00~11:00 (Following morning)

[Charge] Free [Rental] None [Luggage Transportation] Hand-pulled trailers available

[WEB] <http://www.eniwa-ciu.jp/kashiwagi.html/>



## Eniwa Onsen La Foret

Enjoy this natural moor hot springs certified as a Hokkaido Heritage location

A plant based hot spring that is gentle on the skin. It is said to be effective for poor circulation and heats up core of the body in a short time. There is also a restaurant, so why not spend half a day relaxing here!



[Tel] 0123-32-4171 [Add] Enami 4-1, Eniwa [Parking] Available

[Opening Hours] 11:00~23:00 (Last order at 22:20)

[Holiday] Open all year (except New Year's Day and maintenance days)

[WEB] <https://eniwa-onsen.com/>



## Eniwa Onsen Honoka

Natural moor hot spring and two types of hot stone spa

A natural moor hot spring that is known for its skin beauty properties. You can enjoy a salt spring that promotes blood circulation and soothes muscles. There are two types of "ganbanyoku" (hot stone spa): "Bijodo" and "Yujodo".



[Tel] 0123-32-2615

[Add] Toiso 397-2, Eniwa [Parking] Available

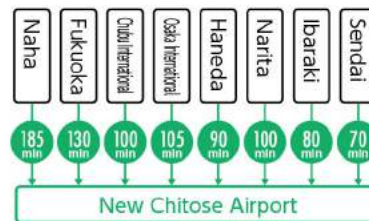
[Opening Hours] 9:00~24:00 (Last entrance 23:30) [Holiday] None

[WEB] <https://yudokoro-honoka.jp/eniwa/>

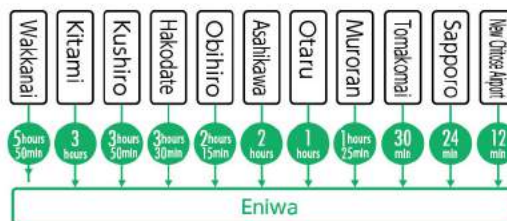


# Travel Access to Eniwa

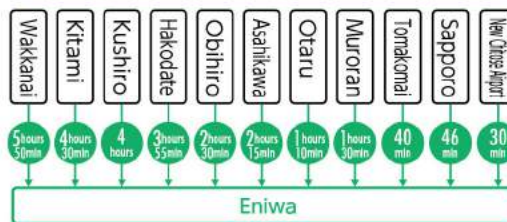
## By Air



## Japan Railway



## By Car



※Time required when using the expressway

## Taxi

Eniwa Hire TEL. 0123-26-6700

Shimamatsu Hire ☎ 0120-972-309

Fuji Transport TEL. 0123-32-2161

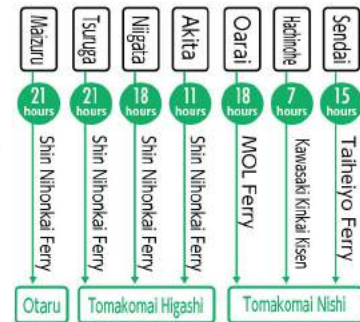
## Local City Bus "Ecobus"

Centered on Eniwa Station, this community travels all across Eniwa. Please use it when sightseeing around the city.

Eniwa Community Bus Search



## By Sea



## Tourist information center

### Bike Sharing Operation



In addition to information on sightseeing & events in Eniwa, we also have pamphlets for garden facilities in the surrounding towns and other parts of Hokkaido.

Tourist Information Center Website

[Tel] 0123-21-8900 [Add] Flower Point "Hanafuru" Center House, Minami Shimamatsu 828-3, Eniwa [Opening Hours] 9:00~17:00 [Holiday] End of Year and New Year's Holidays (12/29~1/3)

