



ENIWA EYE

<https://eniwa-eye.com>



Flower Base  
**Hanafuru**

<https://hanafuru.jp/>



Eniwa City migration & settlement support site  
**Garden City Life**

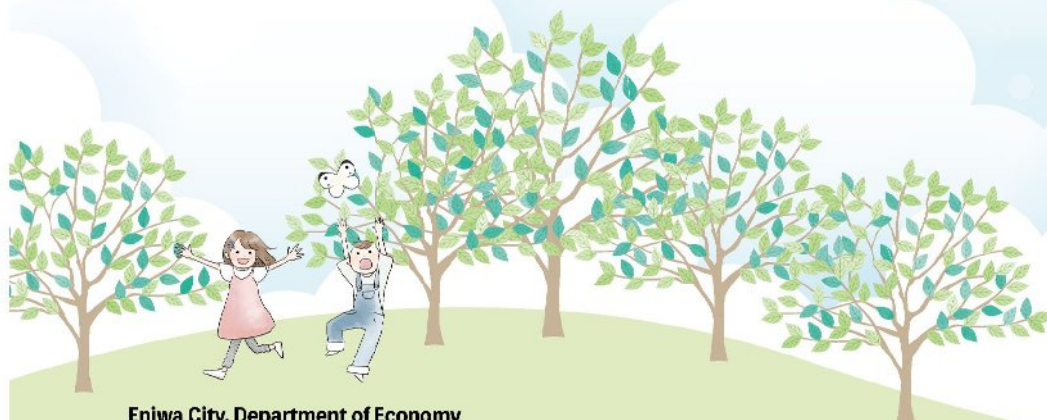
<https://www.eniwan.org/>



Discover "Megumi no Niwa"  
The Colorful Town of Flowers



# Explore Eniwa



**Eniwa City, Department of Economy**  
**Division of Flowers, Greenery, and Tourism**  
1 Kyomachi, Eniwa,  
Hokkaido 061-1498, Japan  
Tel: +81-123-33-3131

**Eniwa Tourism Association**  
828-3 Minami Shimamatsu,  
Eniwa, Hokkaido 061-1375, Japan (Inside Center House)  
TEL +81-123-21-8900

**Eniwa City, Hokkaido**

## What kind of place is Eniwa?

### A Beautiful "Flower City"

#### Where Nature and Urban Life Are in Harmony

Located just a 46-minute drive from central Sapporo and 30 minutes from New Chitose Airport, Eniwa offers a comfortable lifestyle where rich nature—symbolized by Mount Eniwa—blends harmoniously with urban convenience. Widely known as a beautiful "Flower City" with a passion for gardening, Eniwa continues to grow and flourish under its slogan, "A city of flowers, water, and greenery, where people connect and dreams blossom."



## What's to see in Eniwa?

### Explore Creative Gardens and Scenic Valleys

The people of Eniwa have long deepened their connections by growing and enjoying flowers. Their desire to share this circle of warmth with visitors gave birth to Eniwa's unique style of tourism—"Kanko" (a blend of "Kansho," meaning appreciation, and "Koryu," meaning exchange). What began with seven passionate volunteers who dreamed of filling their hometown with flowers and greenery has since spread throughout the community. Today, Eniwa is known as one of Hokkaido's leading producers of flower seedlings.

At the heart of the city lies "Flower Base (Hanafuru)," a garden-themed attraction created through the collaboration of local citizens and the city administration. Here, you can enjoy seven beautifully designed gardens, each crafted with care and creativity by renowned gardeners. For those seeking to immerse themselves in nature, we recommend Eniwa Valley, located at the foot of Mount Eniwa. In the tranquility of this primeval forest, listen to the murmuring streams and let the peaceful sounds help you forget the noise of daily life—reconnecting you with yourself. (p.25)



## The Blessings and History of Eniwa

### Life Nurtured by the Land and Water

Blessed with fertile soil and abundant water, Eniwa is often called "the city of rivers." The Karimba Archaeological Site, a nationally designated historic site located in the Kogane area of Eniwa, tells us that people of the Jomon period—around 3,000 years ago—were already living here, sustained by these natural gifts. Over the centuries, the way of life evolved from hunting, fishing, and gathering to crop cultivation and dairy farming. Yet, throughout each era, people have always enjoyed the blessings of this rich land. Despite the challenges of a cold northern climate, Eniwa's residents even succeeded in cultivating rice—the first achievement of its kind in Hokkaido. Today, the blessings of the land and water continue to bring abundant harvests through rice and field crops, as well as the cultivation of beautiful flowers.



## Experience the True Essence of Eniwa

### Farming, Dairy, and Horseback Riding Adventures

In Eniwa, where agriculture and dairy farming thrive, visitors can enjoy hands-on experiences such as harvesting fresh vegetables or milking cows at local farms and ranches. A popular activity is a barbecue featuring locally grown vegetables, cultivated with minimal use of chemical fertilizers or pesticides. You can also try your hand at making dishes and products using freshly picked vegetables and rich, fresh milk. For those seeking outdoor adventure, horseback trekking at local riding clubs offers an unforgettable way to explore Eniwa's landscapes—perfect even for beginners. (p.13)

## A Charming City Worth Visiting at Least Once

I moved to Eniwa from outside Hokkaido in 2018. One of the things I love most about living here is how convenient the location is — Eniwa is close to both Sapporo and New Chitose Airport, and the expressways make it easy to travel anywhere in Hokkaido, whether to the south, east, or north. The climate is mild and comfortable throughout the year, and the changing seasons offer the beauty that Hokkaido is famous for. In spring, Lake Eniwa transforms its appearance with the deepening shades of green, while in autumn, the stunning combination of colorful leaves and waterfalls creates a magical landscape where you can truly feel close to nature. For daily shopping, I often visit "Kanona," the local farmers market, where I can buy plenty of fresh and delicious produce grown right here in Eniwa. When I want to relax, my favorite place is "Eniwa Onsen Honoka," where you can enjoy moor hot springs and stone saunas at a reasonable price. Another must-see spot is the "Flower Base (Hanafuru)," which opened in November 2020. In spring, it bursts into vibrant color as countless flowers come into bloom. Eniwa is a city rich in nature yet full of everyday convenience — a truly wonderful place to visit, even if just once in your life.



Ryōichi Hirose  
(from Fukuoka Pref.)



Hana Sanpo Street



Eniwa Valley



Lake Eniwa



Farmers Market "Kanona"



Riho Mizuno  
(from Eniwa City)



Around Eniwa Station



Flower Base (Hanafuru)

## Conversations that Create New Connections

During my student days, I traveled across Japan and experienced the kindness of people everywhere I went. Through those journeys, I learned the joy of connecting with others—and they also helped me rediscover the charm of my own hometown. In Eniwa, flowers and greenery can be found throughout the city—along sidewalks, near the station, and in the gardens of many homes. Cherry blossoms in spring, rows of ginkgo trees in summer—riding my bicycle through the streets while admiring the well-tended gardens still brings back fond memories. It was these experiences that inspired me to open a café called "agracrock" in 2017 (now closed). I wanted to create a place in my hometown where anyone could drop by, relax, and feel at ease—and that dream brought me happiness, too. Today, the café has become a space where many people come together—flower enthusiasts, homemakers, students, and office workers alike. Through casual conversations, new connections are born every day. I hope that this warm circle of people will continue to expand, welcoming even those who come to visit Eniwa, and make our city an even more wonderful place to be.



# The Charm of Eniwa, the City of Flowers

## Citizen-Led "Flower City" Initiatives

Eniwa's "Flower City" movement began as a citizen-led initiative to beautify the local environment with flowers. It all started in 1961, when a group of seven volunteers formed an organization that grew flower seedlings on land borrowed from cooperative farmers and distributed them to local elementary and junior high schools. Over time, this activity embraced the spirit of gardening—creating and enjoying beauty—enriching residents' daily lives while fostering new connections among people. What began as a small community effort eventually evolved into a cultural movement, one that not only reflects Eniwa's unique local character but also continues to create new value through harmony between people and nature.



Flower-Filled Culture Association Direct Sales (May 1968)



Green Belt Planting (June 1977)



The 1st "Flowers and Living" Exhibition (August 1990)



Megumino Thousand-Flower Planting Campaign (June 1999)



Opening of "Flower Road Eniwa" (July 2006)



Community Hydrangea Tree-Planting at Three Schools (May 2013)

## From Admiring Flowers to Creating with Them

In Eniwa, the city is also actively working to expand the possibilities of flowers. Many cafés with gardens and restaurants decorated with flowers can be found throughout the city, where visitors can enjoy creative dishes that combine floral inspiration with locally sourced ingredients. A variety of flower-based products have also been developed. Preserved flowers and herbariums, designed to maintain their beauty for

longer, are popular as interior décor items. Other favorites include perfumes, aroma candles, and teas that capture the fragrance of flowers, as well as sweets, accessories, and keychains inspired by floral motifs. Through these creative endeavors, Eniwa's "Flower City" initiative is blossoming into a new form of craftsmanship—one that transforms the beauty of flowers into lasting, tangible creations.



Eniwa-Grown  
Flower Seedlings

Sales Locations

Farmers Market "Kanona"



Flower Cookies  
"Hanako"

Sales Locations

Rose and Riverside Station "Flower Road Eniwa"



Herbarium

Sales Locations

Flower Studio Living Colours



Rose syrup

Sales Locations

Eccrin Village & Road and Riverside Station "Flower Road Eniwa"



Rose confiture

## Enjoy the Connections That Bloom Through Flowers



Sachiko Suzuki

I first became interested in gardening after I finished raising my children and began helping my husband with his gardening hobby.

Wanting to learn more about flowers, I joined the Megumino Flower Gardening Club. Through activities such as maintaining flowerbeds and serving as a flower guide who shows visitors around gardens in the city, what I enjoy most is chatting with people who share the same passion for flowers. When the Open Garden season begins and homeowners welcome visitors into their private gardens, I sometimes have students visit mine as part of their classes. Meeting people I wouldn't normally encounter in everyday life is always such a delightful experience. In the mornings, as I tend to my flowers, local children often greet me with, "Good morning! Your flowers look beautiful again today!" It warms my heart to know they remember me as the flower lady. If visitors to Eniwa can also share conversations through flowers, I believe this joy will grow even deeper—just like the blossoms we nurture together.



Ms. Suzuki's garden



Visitors Touring Ms. Suzuki's Garden



Miki Tsuchiya

## Creating the Future of Eniwa, the City of Flowers

I started working at my family business, Sun Garden, around the time when houses began to appear in Megumino and the Sapporo Beer factory was being built. When the first "Eniwa Flower and Living Exhibition" was held, the slogan "Green for the town, flowers for the windows" inspired us to decorate event venues and residential areas with colorful blooms. The passion and dedication of the organizing committee members at that time deeply moved me. Working together to create something meaningful was such a joyful experience—one that became a driving force behind my more than 30 years of involvement in both flower-related work and community activities. In Eniwa, many residents take pride in beautifying their own gardens, planting flowers around their neighborhoods, and caring for these spaces through regular cleaning and maintenance. I feel proud to live in a city that has nurtured and protected its flower-filled landscapes for over 60 years. The establishment of "Flower Base (Hanafuru)" in 2020 represents both the culmination of Eniwa's long-standing Flower City efforts and a new beginning. As we look to the future, I hope people of all generations will come together—sharing ideas on how to connect daily life with flower tourism, and continuing to grow the beautiful culture of flowers in Eniwa.



Sun Garden



Ms. Tsuchiya Engaged in Community Activities



## Where to Eat in Eniwa

### Enjoy “Flower City”-Style Restaurants and Cafés

In Eniwa, where gardening is a beloved part of life, you'll find many farm restaurants and garden cafés that reflect the city's “Flower City” charm. From early summer to autumn, relax at terrace seats surrounded by flowers and forests, and enjoy tea or a meal in the gentle breeze. At restaurants attached to farms and dairies, you can savor dishes made with freshly picked vegetables and freshly made cheese. Eniwa is also home to many patisseries and bakeries that take pride in using locally sourced ingredients—another delightful taste of the city's natural abundance.



#### Cafe Tea's Garden

Enjoy dishes made with freshly harvested vegetables from the farm, surrounded by beautiful flowers. (≈P15～)



#### Tomoe Bagel

Using Hokkaido wheat and natural yeast to make bagels with an irresistible texture. (≈P17～)



#### Nomu Gela

A popular local specialty — “Drinkable Gela” made with freshly collected raw milk from Eniwa. (≈P19～)



#### Cafe Fukuzo

A riverside café where wild birds gather. The owner takes great care not only with the dishes but also with the handcrafted tableware. (≈P27～)



#### Milk Atelier

A farm restaurant where you can savor freshly made, homemade mozzarella cheese. (≈P27～)

## Where to Shop for Souvenirs

### Popular Spots for “Made in Eniwa” Gifts

Two of Eniwa's most popular shopping spots—the “Kanona” Farmers Market and the Road & Riverside Station “Flower Road Eniwa”—welcome as many as 8,000 visitors a day from both inside and outside the city. At Kanona, you'll find a wide variety of locally produced goods, including fresh vegetables, fruits, and flowers, as well as sweets, pickles, tofu, and other handmade products created by local farmers and businesses. At Flower Road Eniwa, you can browse a rich selection of souvenirs from Hokkaido and Eniwa, such as rice cakes (daifuku and ohagi) made with locally grown glutinous rice, handmade soaps, and charming local crafts—perfect for personal treats or thoughtful gifts to take home.



#### Eni Dora

A dorayaki (sweet pancake) sandwich made with plenty of Hokkaido-grown Enso pumpkin, kneaded into both the batter and the cream.



#### Mame Daifuku

A soft rice cake filled with sweet bean paste and kneaded with dark soybeans into the mochi dough made from Eniwagrown glutinous rice.



#### Sweet Pumpkin

Layers of pumpkin cubes, whipped cream, and sponge cake baked in a traditional kamameshi-style bowl—made with Enso.



#### Eniwa Jingisukan (Grilled Mutton)

Tender, low-calorie, and low-cholesterol lamb, marinated in a special house sauce.



#### Eniwa Tofu

Tofu made from Eniwa-grown “Toyomasari” soybeans, characterized by its rich aroma and pronounced sweetness.

#### Shop location

Road and Riverside Station “Flower Road Eniwa”

#### Shop location

Farmers Market “Kanona”

## Enjoy Eniwa in Just One Day!

### Fun for Families and Couples Alike

Want to make the most of Eniwa in just one day? Here are our recommended spots, organized into seven themed areas to help you explore efficiently and enjoyably. If you'd like to experience Eniwa's flowers, start your journey at “Flower Base (Hanafuru)”, the city's main hub, and stroll through the Megumino area. Those who prefer a more active outing can cycle around the Kogane area, visiting charming cafés and local shops, or drive out to the Banjiri and Farm areas to relax amid pristine forests and waterfalls. Whether you're short on time or have a full day to spend, Eniwa offers a variety of experiences to match your pace and style of travel. (For details, please see the Area Guide on p.15)



#### Banjiri & Makiba Area



#### Shimamatsu Area



#### Megumino Area



#### Eniwa Station West Exit Area



#### Eniwa Station East Exit Area



#### Wakakusa & Kashiwa Area



#### Banjiri & Makiba Area



#### Toiso & Enami Area





## A New Symbol Born in Eniwa, the City of Flowers

Opened in November 2020, "Flower Base (Hanafuru)" is a new landmark in Eniwa, the City of Flowers. In addition to the Road & Riverside Station "Flower Road Eniwa" and the "Kanona" Farmers Market, the area now features newly added facilities such as the Garden Area, the Eniwa Family Garden "Lilia", and the RV Park Flower Road Eniwa. It is a place where both children and adults can relax, play, and enjoy—a new symbol of Eniwa's spirit as a City of Flowers. (Map p.18)

[Addr] 828-3 Minami Shimamatsu, Eniwa  
[Tel] 0123-29-6721

## Farmers Market "Kanona"



Around 70 producers, mainly from within Eniwa City, sell vegetables, wild plants, and flowers—all carefully grown with dedication and care. Among the roughly 300 varieties of vegetables, you'll even find some rare and unique kinds that keep visitors coming back for more. (p.9)

## Road and Riverside Station "Flower Road Eniwa"



More than one million visitors a year come to enjoy food and shopping here. The barrier-free interior makes it comfortable and accessible for families with young children and visitors using wheelchairs alike. (p.9)

## Garden Area

Seven unique gardens created by some of Hokkaido's leading gardeners, each with its own creative touch. These gardens are designed not only for admiring flowers and trees, but also to invite visitors to experience the richness and changing beauty of nature through play.

Supervised by  
Takano Landscape  
Planning Co., Ltd.  
Shuichi Murata



For more details →

## Starbucks Coffee Hanafuru Eniwa Branch Eniwa Onigiri Ebisu



Starbucks Coffee Hanafuru Eniwa Branch opened in December 2021. Eniwa Onigiri Ebisu, which opened in March 2022, is a popular rice ball shop where you can enjoy rice grown in Eniwa.

## Eniwa Family Garden "Lilia"



A play space designed to nurture children's imagination, understanding, and communication skills. (p.10)

## RV Park Flower Road Eniwa



A paid facility within the park designed exclusively for overnight stays in RVs. It is equipped with showers and a kitchen available 24 hours a day, and is conveniently located near a shopping supermarket, convenience store, and gas station. (p.10)

## Eniwa Tourist Information Center



In addition to information on sightseeing and events in Eniwa, you'll also find pamphlets and brochures for nearby cities and towns, as well as garden facilities across Hokkaido. (p.30)  
[Hours] 9:00-17:00 [Closed] Wed (Nov-Mar) / New Year holidays (Dec 27-Jan 4) [Tel] 0123-21-8900

## A Garden Celebrating Life - Community Hall



This community hall can be used for a variety of purposes—from workshops and cooking classes to small events and movie gatherings with friends using a large-screen monitor.



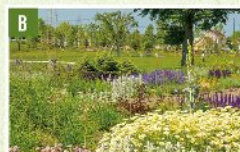
## Fairfield by Marriott Hokkaido Eniwa



A simple and relaxing hotel based at the Road & Riverside Station, built around the concept of "Questing the Unknown Japan." (p.29)



**Ecorin Village - Kitchen Garden**  
An eco-friendly garden featuring vegetables, fruit trees, and herbs.  
Aleph Inc. -  
Takako Maeno / Tsukasa Goto



**Gravel Garden**  
A collection of plants that thrive in gravelly soil.  
Ueno Farm -  
Sayuki Ueno



**A Garden Celebrating Life**  
Proposing ways to enjoy gardens as a part of everyday living.  
Eniwa City Flower Masters Association



**The Playground**  
Experience a sense of unity with nature in the forest.  
Tokachi Millennium Forest -  
Midori Shintani / Shintaro Sasagawa



**Picnic & Library Garden**  
A place to relax, read, and enjoy a picnic on your own way.  
Ono Garden Planning Inc. - WMI Garden Design Office -  
Kaumoto Kashiwakura Miki Sato



**Woodland Wonders**  
A forest path where you can feel the changing seasons.  
Ikoro no Mori -  
Mayumi Kitamura / Hajime Takabayashi / Sach Tanabe



**Rainbow Bird Sunny "Hill of Flowers and Wind"**  
Sun Garden Inc. -  
Miki Tsuchiya

## Road and Riverside Station "Flower Road Eniwa"



[Hours] 9:00-16:00 (Apr-Oct) /  
9:00-17:00 (Nov-Mar)  
[Closed] New Year holidays (Dec  
31-Jan 2)  
[Tel] 0123-87-8787



### Skillet Curry Konayuki Tonton

Enjoy a flavorful spice curry made with "Konayuki Tonton," a rare free-range pork produced in Eniwa. A special kids' curry is also available, making it a perfect spot for families.  
※Last order: 30 mins before closing.



### Eni-Pan

Featuring around 40 kinds of freshly baked breads every day, including the overwhelmingly popular Pumpkin Pudding Bread. You can also enjoy your purchase in the eat-in area inside the shop.



### goasis (TEA Stand)

Offering Daifuku made with locally grown Eniwa glutinous rice and original drinks available only here. Perfect for a relaxing break or to enjoy during your garden stroll.  
※Last order: 30 mins before closing.



### Ra-no

Discover a selection of natural soaps and lifestyle goods made in Eniwa—perfect as a treat for yourself or as a gift. The soaps are especially popular, with many customers buying them in bulk.



### Hana Road GIFT

Find a wide selection of souvenirs from Hokkaido and Eniwa, including exclusive items available only here. Sweet treats made with Eniwa's specialty Eblisu pumpkins are also very popular.



Information Corner



24-Hour Restroom

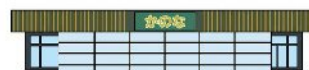


Nursing Room &  
Diaper Changing Area



Kids' Space

## Farmers Market "Kanona"



[Hours] 9:00-17:00 (Apr-Oct) /  
9:00-16:00 (Nov) / 10:00-16:00  
(Dec-Mar)  
[Closed] New Year holidays  
[Tel] 0123-36-2700



### A market connecting residents and local producers

Around 70 producers, mainly from within Eniwa City, sell vegetables, wild plants, and flowers—all carefully grown with dedication and care. Among the roughly 300 varieties of vegetables, you'll even find some rare and unique kinds that keep visitors coming back for more. After the April 2020 renovation, the sales area was expanded, and the market is now open year-round.



Active Area



Ball Pool Area

## Eniwa Family Garden "Lilia"

A new play space in where children can explore their curiosity and try new things.

A safe and welcoming facility where children can play both indoors and outdoors. Every day, many children gather here, making it a great place to make new friends. The facility also hosts regular parent-and-child events and creative programs that are very popular among visitors.

[Hours] 9:30-16:30 (Last admission 15:20)  
[Closed] 4th Wed of each month / New Year holidays  
(Dec 28-Jan 3)  
[Tel] 0123-29-6090



Baby Area



Role Play Area

The indoor area consists of four zones — Active, Ball Pool, Role Play, and Baby. The colorful play equipment made by BørneLund stimulates children's curiosity and encourages them to explore and try new things.

### Outdoor Area

Children can run freely and play to their heart's content on the soft grassy field, using various play equipment. The entire area is fenced for safety, so parents can relax while their children play.



## RV Park Flower Road Eniwa

Enjoy a relaxing time surrounded by flowers and greenery.

A paid facility within the park designed exclusively for overnight stays in vehicles. Here, you can feel close to flowers and greenery, and at night relax under the starry sky in a peaceful atmosphere. The site is equipped with free 24-hour showers and a kitchen, and is conveniently located near a hot spring, supermarket, convenience store, and gas station.



[Check-in] 12:00-16:45 [Check-out] 10:00 the next day  
[Closed] New Year holidays (Dec 28-Jan 3)  
[Tel] 0123-29-6721



Here for more details

## Ecorin Village

At Ecorin Village, pasture-based sheep farming plays a central role in its agricultural activities. More than half of the 150-hectare site is covered with grassland. From spring to autumn, sheep are released to graze freely in the fields under a system of rotational grazing, moving them to new pastures where the grass is best. Depending on the season, you may even see flocks of ewes and lambs grazing together—a delightful sight to enjoy while walking or camping in the area.

[Addr] 281-1 Makiba, Eniwa  
[Tel] 0123-34-7800 (Ecorin Village Support Center)

Fees and business hours are subject to change. Please check the official website in advance for the latest information.  
[URL] <https://www.ecorinvillage.com>



### Rakuda-ken – Pasta & Authentic Wood-fired Pizza



A farm restaurant proud of its aromatic pasta made with Italian wheat and Neapolitan-style pizzas baked in a wood-fired oven. Seasonal specialties such as limited-edition pizzas, pastas, and parfaits are also available. Enjoy the heartwarming flavors of Italian "mamma's cooking" made with carefully selected ingredients.

### Tomato Forest



This exhibition facility showcases hydroponically grown tomatoes cultivated from a single seed. Each year, the goal is to harvest 20,000 tomatoes. The sight of vines, leaves, and fruits spreading overhead is truly breathtaking. In 2013, it was recognized by Guinness World Records as "The Largest Tomato Plant."

### Ecorin Village School (Nature Experience Program)



Ecorin Village School offers environmental education programs where participants can connect with nature and living creatures through hands-on experiences. The "Ecorin Village Kids" program runs once a month on Sundays for six months, while the "Parent-Child Experience Course" offers an easier way to enjoy nature together on Saturdays.

(please check the website for details)

### Welcome Center



Start your visit to Ecorin Village here! This facility serves as both a souvenir plaza and information center, and is equipped with a café corner, nursing room, and restrooms. You'll also find a variety of Ecorin Village original goods and specialty products from Hokkaido available for purchase.

### Souvenirs & Original Goods



A wide selection of souvenirs is available, including Ecorin Village's signature Jingsukan (grilled mutton) made with its secret sauce, original products using tomatoes from the Tomato Forest and edible roses, as well as sheep-themed T-shirts and wool items.

### Wool Craft Workshop



Try your hand at craft-making using wool from Ecorin Village's own sheep. From authentic needle-felted projects to simple creations made by winding yarn, a variety of hands-on experiences are offered each season.

## Camping in Eniwa

### Ecorin Village Sheep Sheep Camping Field



This campground features seven types of campsites across the area. The "Sheep Site," a free site located next to the sheep pasture, offers the unique chance to camp while watching the sheep up close, depending on the timing. Another favorite is the "Dog Run Site," where you can enjoy camping with your dog off-leash within the site. A BBQ House, where everything is prepared for you—just bring your ingredients and enjoy without cleanup—is also available on-site.

[Tel] 0123-34-7800 [Addr] 281-1 Makiba, Eniwa  
[Parking] Available [Hours] Campsite: Late Apr–Early Dec /  
BBQ House: Late Apr–Late Oct / Check-in: 12:00 /  
Check-out: 10:00 the next day [Closed] Wed  
<https://www.ecorinvillage.com/facility/campingfield.html>



### Maple Campground



This spacious campground offers an open grassy tent area that can accommodate over 120 tents, along with RV sites and powered sites to meet the needs of all types of campers.

[Tel] 0123-39-3345 [Addr] 576-1 Nishi Shmatsuta, Eniwa  
[Parking] Available [Hours] Check-in: 11:30–19:00 (Summer)  
Check-out: Day use: 8:30, Winter 17:00, 11:00 the next day (overnight)  
Open year-round [Closed] Summer/Winter chargeover  
<https://maplecamp.net/>



### Hono Camp



Located within Eniwa Onsen Honoka, this campground lets you enjoy free-style camping along with unlimited access to two natural hot springs—a moor spring and a salt spring. The campground fee includes the onsen admission, making it easy to enjoy both the outdoors and a relaxing soak in the hot springs.

[Tel] 0123-32-2615 [Addr] 397 Toiso, Eniwa  
[Parking] Available [Hours] Late Apr–Late Oct /  
Check-in: 10:00–19:00 / Check-out: 17:00 (day use),  
11:00 the next day (overnight) [Closed] Winter  
<https://yudokoro-honoka.jp/eniwa/camp/>



### Murakami Farm Campground



This campground offers a relaxing stay surrounded by nature, where you can interact with animals and enjoy the peaceful atmosphere of the farm. With an animal plaza, dining area, and photo spots, you can spend an entire day having fun right on the farm.

[Tel] 080-6061-9966 [Addr] 156 Toiso, Eniwa  
[Parking] Available [Hours] Check-in: 12:00–17:00 /  
Check-out: 17:00 (day use), 11:00 the next day (overnight)  
[Closed] Tue / Winter (Dec–Mar)  
[https://murakami-farm.com/contents\\_324.html](https://murakami-farm.com/contents_324.html)



### Campers Area Eniwa TCS Village



If you're looking to enjoy a relaxing camping experience in the rich natural surroundings of Eniwa with your family or friends, this is the place! You can choose from various styles of camping, including free tent sites, camping trailers, and outdoor saunas.

[Tel] 050-8273-7927 / 0100-17800 [Addr] 307-1 Sanjiri, Eniwa  
[Parking] Available [Hours] 11:00–18:00 (Reservation required; please check the official website for details before visiting)  
[Closed] regular (Operations from Mar–Apr may vary depending on snow conditions)  
<https://reserva.be/tcsvillage>



### Kashiwagi Recreation Facility



Known as one of Eniwa's most popular spots for autumn foliage, this area becomes lively with many visitors during the fall season. (Advance reservation is required)

[Tel] 0123-29-4636 [Addr] 3-672 Kita Kashiwagi, Eniwa  
[Parking] Available [Open Period] Mid May–Sep 30  
[Hours] 13:00–11:00 the next day [Fee] Free  
[Rental Equipment] None [Baggage Transport] Handcart available  
<https://eniwamachizukuri.com/kashiwagi/>





## Experience the Joy of Eniwa

Blessed with rich nature and a thriving agricultural and livestock industry, Eniwa offers a variety of unique experiences. You can enjoy activities such as vegetable harvesting and cow milking, or visit facilities offering horseback riding and zipline adventures surrounded by nature.



01



### Murakami Farm

#### Learn the Value of Life Through Dairy Farming

Also known as Takatoshi Farm, Murakami Farm offers hands-on dairy experiences such as milking cows and making butter and ice cream from freshly squeezed milk. Through these activities, visitors can learn about the importance of food and life. Children especially love the Animal Plaza, where they can meet many animals, and the Tractor Wagon Ride that gently rolls across the grasslands. A campground is also available for visitors to enjoy a full day on the farm. (※ p.12)

[Tel] 080-6061-9966  
[Addr] 156 Toiso, Eniwa  
(MAP ※ p.27)  
[Parking] Available  
[Hours] 10:30-17:00  
[Closed] Tue / Winter  
(Dec-Mar)

google Map



02



### Yogo Farm

#### Enjoy Barbecues and Pizza-Making

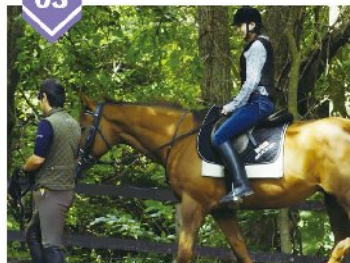
Dedicated to soil quality and sustainable farming, Yogo Farm grows and sells around 50 varieties of vegetables. From May to October, visitors can experience vegetable harvesting, barbecues, soba (buckwheat noodle) making, and pizza-making using freshly picked vegetables. At the farm's direct sales store, you can also enjoy freshly harvested vegetables and a unique tomato-flavored soft-serve ice cream.

[Tel] 0123-37-2774  
[Addr] 323 Hoel, Eniwa  
[Parking] Available  
[Hours] 9:00-16:00 (Dec-Apr)  
/ 9:00-18:00 (Late Apr-Nov)  
[Closed] New Year Holidays

google Map



03



### Suzuran Riding Club

#### Easy Horseback Riding for Beginners

A popular riding club even among horse racing fans, where you can ride retired racehorses. Beginners can join with confidence — instructors carefully guide you through everything, from how to put on riding boots to how to ride and lead the horse. Helmets, boots, and safety vests are provided free of charge, and accident insurance is also included.

[Tel] 0123-36-6386  
[Addr] 548 Nishi Shimamatsu, Eniwa (MAP ※ p.16)  
[Parking] Available  
[Hours] 10:30-15:00  
[Closed] Mon (Tue if Mon is a national holiday) / Dec 31

google Map



04



### Horse Garden MURANAKA

#### Explore Eniwa on Horseback

Enjoy horse trekking through Eniwa's beautiful landscapes and take in the scenery from a completely new perspective. Even beginners can ride with confidence — experienced guides lead the horses at a gentle pace, ensuring a safe and relaxing experience. Depending on your skill level, you can choose from three courses: the Pasture Ride, Forest Bath Ride, or River Crossing Ride.

[Tel] 090-3890-1171  
[Addr] 152 Makiba, Eniwa (Inside Muranaka Farm, MAP ※ p.26)  
[Parking] Available  
[Hours] 10:00-17:00  
[Closed] Open year-round

google Map



05



### Suparu Berry

#### An All-Weather Indoor Strawberry Farm!!

From January to May, you can enjoy strawberry picking even during Hokkaido's winter. The farm grows Tochiotome strawberries, cultivated with advanced technology in a clean, controlled environment. Each berry is exceptionally sweet and full of natural flavor, letting you savor the true taste of strawberries.

[Tel] 090-8899-1541  
[Addr] 2-2-44 Kash wagicho, Eniwa (MAP ※ p.24)  
[Parking] Available  
[Hours] 10:00-15:00 (Winter only)  
[Closed] Sun & Mon

google Map



06



### Midori no Furusato Forest Park

#### Connect with Nature and Feel Its Living Energy

On Saturdays, visitors can enjoy the Quiz Rally, where you explore the park while answering quiz questions to win small prizes. On Sundays, try the Wood Medal Craft Workshop, where you can make your own original medal using acorns and nuts. Events may be canceled depending on weather or park conditions.

[Tel] 0123-33-0401  
[Addr] Banjiri, Eniwa (MAP ※ p.26)  
[Hours] 9:00-17:00 (Apr 29-Nov 3)  
[Parking] Available

google Map



07



### Forest Adventure Eniwa

#### Thrilling Aerial Adventures in a Vast Forest!

Set within a spacious natural forest, this outdoor park offers exciting treetop experiences such as canopy walks and zipline glides high above the ground. During the winter season, you can also enjoy long zipline rides through the snow-covered forest, laser tag, and snowshoe trekking.

[Tel] 090-4057-4560  
[Addr] 1275 Nishi Shimamatsu, Eniwa (Inside Rurumappu Nature Park Foreland, MAP ※ p.16)  
[Parking] Available [Hours] 9:00-17:00 (Mid Apr-Late Nov) / 10:00-16:00 (Early Dec-Early Apr)  
[Last admission] at 15:00 hours vary by sunset time  
[Closed] Irregular due to our regular

\*Advance reservation required

google Map



## Rich in Nature and Steeped in Culture Shimamatsu Area

### PICK OUT / A Great Spot for Lunch, Too **01** Soft Serve Workshop Lulu



Their special blend of soft serve offers a rich flavor with a clean, refreshing aftertaste. The tofu donuts and lunch menu are also local favorites.



[Tel]0123-37-5110  
[Addr]275 Nish Shimamatsu, Eniwa (Inside Rurumappu Nature Park Fureland; [Parking]Available  
[Hours]11:00-17:30 (Weekdays) / 10:00-18:00 (Sat-Sun & Holidays) / 11:00-16:00 (Winter)



### PICK OUT / Healthy Dishes Full of Fresh Vegetables **03** Cafe Tea's Garden



Popular menu items include the crispy chicken outlet lunch and fried chicken lunch, both made with lean chicken breast for a light, healthy taste. All sweets such as chiffon cakes, muffins, and scones are handmade.



[Tel]0120-980-386 [Addr]561-4 Nishi Shimamatsu, Eniwa (Inside Sun Garden) [Parking]Available [Hours]11:00-17:00 (Mon, Fri-Sun / LO 16:30; [Closed]Tue-Thu (Open on public holidays) / Dec-Mar

### PICK OUT / Exquisite Pork Rice Bowls and Handcrafted Soba Noodles **05** Sumiyaki Butadon Kukai



The signature pork rice bowl features locally raised Hokkaido brand pork grilled over charcoal and served with freshly milled Hokkaido "Yamagata" rice. The soba noodles are handmade using stone-milled "Nittawase" buckwheat, also grown in Hokkaido. Both the dipping sauce and tare are crafted with authentic soy sauce made from Hokkaido-grown soybeans, complemented by natural ingredients such as kabocha (pumpkin), and kombu (kelp). Every dish is prepared with care to bring out the authentic flavors of the ingredients, ensuring both safety and exceptional taste.

[Tel]0123-37-1230 [Addr]1-10-2 Shimamatsu Kotobukicho, Eniwa  
[Parking]Available [Hours]11:00-14:30 (Mon, Wed-Fri) / 11:00-14:30 & 17:00-19:30 (Sat-Sun) [Closed]Tue

### PICK OUT / A Cozy Hidden Retreat **02** Café Cou



This renovated traditional house café offers a warm, relaxing atmosphere filled with carefully selected interiors, aromatic coffee, and beautifully crafted sweets made from natural ingredients. Enjoy a slow, peaceful moment surrounded by a touch of retro charm.

[Addr]2-10-6 Shimamatsu Nakamachi, Eniwa  
[Parking]None (Please use JR Shimamatsu Station parking lot)  
[Hours]11:00-17:00 (Tue-Fri) / 13:00-17:00 (Sat) [Closed]Sun & irregular holidays



### PICK OUT / Full of Flowers and Gardening Inspiration **04** SUN GARDEN



Over 500 varieties of annuals, perennials, flower seedlings, and vegetable seedlings are grown here. The garden, complete with a stream and pond, is filled with colorful blooms and plants that delight every visitor. Gardening experts are always on hand to share tips on growing flowers and open garden design—a must-visit spot for flower lovers!

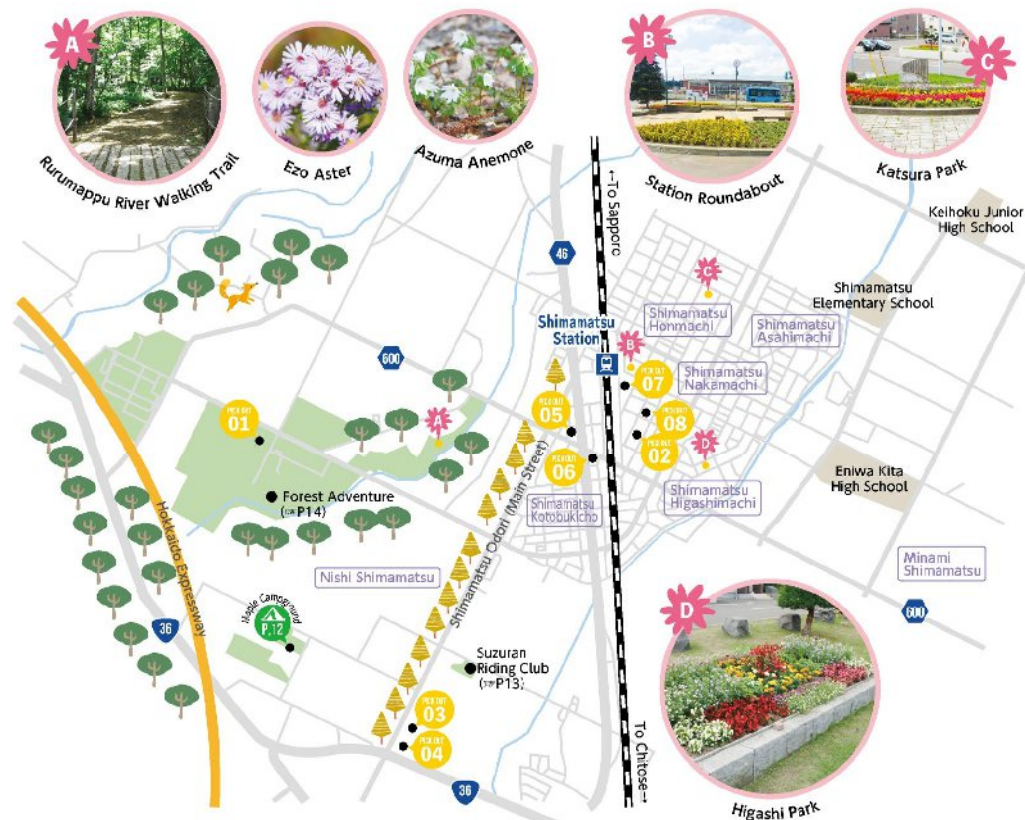
[Tel]0120-980-386 [Addr]561-4 Nishi Shimamatsu, Eniwa  
[Parking]Available [Hours]9:00-17:00 (Apr 1-Oct 13)  
[Closed]Thu (Sep-Oct) / Oct 14-Mar



### PICK OUT / An "Indoor Park" Where People's Stories Connect **06** Junction

A lively gathering spot offering a rotating lineup of restaurants and cafes serving soup curry, pasta, spice curry, roll cakes, and honey caramel. Free live music performances are often held, adding to the vibrant atmosphere. True to its concept as an "indoor park," the spacious interior can be enjoyed freely as a relaxing community space—perfect for dropping by anytime.

[Tel]0123-25-8384  
[Addr]1-28-10 Shimamatsu Kotobukicho, Eniwa  
[Parking]Available  
[Hours]Lunch 11:00-15:00 (LO 14:30) / Dinner 17:00-24:00 (LO 23:30)  
[Closed]Wed



### PICK OUT / A Café and Cultural Exchange Space **07** Musōkan

Built in 1937, this historic building serves not only as a café but also as a venue for musical performances and art exhibitions. It offers visitors a serene and elegant atmosphere where they can experience the beauty of art and culture.

[Tel]0123-36-6050 [Addr]1-2-20 Shimamatsu Nakamachi, Eniwa [Parking]Available [Hours]Event Hall 9:00-7:30 (reservations until 22:00) / Café 10:00-17:00 (LO 16:30; [Closed]New Year Holidays



### PICK OUT / A Local Shimamatsu Favorite **08** Kō Sushi

A local sushi restaurant always bustling with customers, known for its affordable lunch specials. Its signature "Kō Sushi Don"—a generous bowl topped with beautifully arranged fresh seafood—is especially popular (available in limited quantities).

[Tel]0123-36-6717 [Addr]1-6-13 Shimamatsu Nakamachi, Eniwa  
[Parking]Available [Hours]11:30-13:45 / 17:00-20:30  
[Closed]Mon / Sun evenings

# A Colorful Gathering Place for Gardeners Megumino Area

## PICK OUT/ 01 earth Contemporary Eniwa



A restaurant where you can relax and enjoy traditional Nepalese and Indian cuisine in a calm, inviting atmosphere.

[Tel] 0123-25-3277  
[Addr] 6-21-6, Megumino Nishi, Eniwa [Parking] Available  
[Hours] 11:00-21:30 (LO 21:00)  
[Closed] Irregular

## PICK OUT/ 03 Coffee Carrot

Enjoy exceptional coffee made from the highest-quality beans carefully selected by international coffee appraiser Daisuke Uchikura. Relax and savor a luxurious moment while gazing out at the garden blooming with colorful flowers.

[Tel] 0123-36-4561  
[Addr] 1-25-2 Megumino Nishi, Eniwa [Parking] Available [Hours] 09:00-16:30  
[Closed] Wed & Sun



Buy It in the Morning,  
Enjoy It for Breakfast

## PICK OUT/ 05 Bakery House Peacock



A beloved local bakery bustling with regulars from early morning. Their soft and chewy bread loaves are a must-try favorite!

[Tel] 0123-37-1361 [Addr] 6-21-5 Megumino Nishi, Eniwa [Parking] Available  
[Hours] 6:30-18:00  
[Closed] Wed & 1st Tue of each month

## PICK OUT/ 02 Tomoe Bagel

Made with 100% Hokkaido wheat and natural yeast, each bagel is carefully handcrafted using traditional methods with a focus on safety and quality. Enjoy their chewy texture and discover why they're so loved for their delicious taste.



[Tel] 0123-21-9129 [Addr] 2-2-12 Megumino Nishi, Eniwa [Parking] Available  
[Hours] 11:00-17:00  
[Closed] Open daily

## PICK OUT/ 04 Tebukuro



A delightful selection of items chosen by staff who truly love everyday goods. The shop feels like a treasure chest turned upside down—full of charm and surprises.



[Tel] 0123-36-3957  
[Addr] 1-23-4 Megumino Nishi, Eniwa [Parking] Available [Hours] 11:00-18:00  
[Closed] Tue & Wed

## PICK OUT/ 06 Cake House POMME



A cozy cake shop offering handmade sweets made with carefully selected ingredients from Hokkaido.



[Tel] 0123-36-3767 [Addr] 5-1-8 Megumino Nishi, Eniwa [Parking] Available  
[Hours] 10:30-18:00 [Closed] Mon & Tue

## PICK OUT/ 07 KUROMAME

A cozy spot where visitors of all ages can casually enjoy traditional Japanese sweets—dango (rice dumplings) and shaved ice. Perfect for a relaxing stop during your stroll around Eniwa.

[Tel] 090-2679-8861 [Addr] 6-21-4 Megumino Nishi, Eniwa [Parking] Available (in front of the store) [Hours] 10:00-16:00 [Closes when sold out]  
[Closed] Thu & irregular holidays



## PICK OUT/ 08 Megumino Central Park

A spacious park with gentle hills located in the heart of Megumino. Within the park grounds, you'll find a library, baseball field, tennis courts, and an open-air music stage. In spring, enjoy a leisurely walk beneath blooming cherry blossoms; in summer, various sports tournaments such as baseball and tennis take place. Autumn brings lively music festivals, and in winter,



[Addr] 3-9 Megumino Kita, Eniwa  
[Parking] Available  
[Facilities] Restrooms closed Nov-Mar



## PICK OUT/ 09 Eniwa City Historical Museum



The museum features six themed exhibition rooms that explore the history and development of Eniwa. It offers a rich collection of archaeological artifacts, including beautifully lacquered accessories excavated from the nationally designated Karimbo Ruins.

## PICK OUT/ 10 Hanafuru Flower Base



A popular tourist destination centered around a vast garden area. Visitors can enjoy a variety of attractions, including the road and riverside station "Flower Road Eniwa," the local farmers market "kanona," the children's playground "Lila," and the RV park.

## The Gateway to Eniwa. Full of Unique Shops Eniwa Station West Exit Area

### PICK OUT 01 Authentic Italian Cuisine at a Reasonable Price Italian Cuisine IL PLANETARIO



A cozy Italian restaurant where everyone—from children to adults—can enjoy authentic flavors with ease. The Pescatore prepared by the owner-chef, who has over 20 years of experience in Italian cuisine, is simply exquisite. Treat yourself to a delightful lunch or an elegant dinner for a touch of everyday luxury.

[Tel]0123-25-9988 [Addr]1F Residence Alpha, 1-2 Sakaemachi, Eniwa [Parking]Available (3 spaces)  
[Hours]Lunch 11:30-15:00 (LO 14:30) / Dinner 18:00-21:00 [Closed]Mon (Tue if Mon is a national holiday) / regular holidays



### PICK OUT 03 A Cup of Happiness for Your Everyday Life FORTUNA COFFEE

A specialty coffee shop opened by an owner who wishes to share happiness (FORTUNA) through every cup. Their original blend offers a pleasant balance of mild bitterness and refreshing acidity, making it smooth and versatile for any occasion. Takeout and coffee beans are also available for purchase.



[Tel]050-8880-7435  
[Addr]1F-B Residence Alpha, 1-2 Sakaemachi, Eniwa [Parking]Available  
[Hours]10:00-13:00 / 14:00-19:00  
[Closed]Mon & irregular holidays

### PICK OUT 05 The Best Place to Find Eniwa's Local Specialties Enimarche



Located inside the building directly connected to JR Eniwa Station, Enimarche is Eniwa's official antenna shop. It offers a wide selection of local specialties such as sweets made with Eniwa-grown ingredients. Don't miss the "drinkable gelato" from Nomu Gela Coffee, made with freshly harvested raw milk from Eniwa.

[Tel]0123-33-3801 [Addr]3F Izarigawa, 1-6-1 Aioimachi, Eniwa [Parking]Paid parking available for business hours and holidays, please check the store's official social media.

### PICK OUT 02 Smoked Delicacies Crafted by a Pastry Chef! Smoked Kitchen KEMUMAKI+KUN



From their signature Smoked Chikuwa Éclair to unique creations like Smoked Zang (fried chicken) and Smoked Butter Canelé, every item is born from innovative ideas and pairs perfectly with a good drink. An eat-in area is also available, so you can unwind after work while enjoying a glass of something with your favorite smoked treat.



[Tel]0123-25-1122 [Addr]1F-C Residence Alpha, 1-2 Sakaemachi, Eniwa [Parking]Available [Hours]11:30-19:00 (Wed-Sat) / 11:30-18:00 (Sun)  
[Closed]Mon & Tue

### PICK OUT 04 Handmade Soba Shikunrō Main Branch



Known for its thick, short noodles with a firm, satisfying texture that fully brings out the rich aroma and flavor of soba. A renowned restaurant loved by soba enthusiasts not only from Hokkaido but also from across Japan.

[Tel]0123-32-3059 [Addr]53 Motomachi, Eniwa [Parking]Available [Hours]11:00-19:00 (Mon 11:00-14:00; closes when sold out) [Closed]Tue

### PICK OUT 06 Just a 7-Minute Walk from Eniwa Station Menya Kawahara



This ramen shop is best known for its light and savory Shio Ramen, made with a perfectly balanced, flavorful broth. Their authentic Sichuan-style Tantanmen also has many loyal fans for its rich, spicy taste.

[Tel]0123-21-9487 [Addr]74 Sakaemachi, Eniwa [Parking]None [Hours]11:00-14:30 / 17:00-until soup runs out [Closed]Mon (open if Mon is a public holiday)

### PICK OUT 07 Eniwa's Soul Food Shake Yaki Honpo

A long-loved local favorite, Shakeyak is a fish-shaped pastry filled generously with sweet Tokachi red bean paste. Other flavors such as cream, chocolate, and curry are also available, along with seasonal specials.

[Tel]0123-34-7666 [Addr]2-1-1 Aioimachi, Eniwa [Parking]Available [Hours]11:00-18:00 [Closed]Irregular



### PICK OUT 08 Live Café Mojo Hand

A cozy café where you can enjoy dishes like omelets, curry, pasta, and more. Regular live music performances are also held here—perfect for music lovers. You might even catch a show by a famous musician!

[Tel]0123-33-4447 [Addr]2-3-28 Aioimachi, Eniwa [Parking]Available  
[Hours]11:00-23:00 (Lunch 12:00-14:00)  
Reservations are recommended for lunch or visits. [Closed]Irregular



### PICK OUT 09 Featuring Kawara Soba and Mikan Hotpot Fiesta



A restaurant dedicated to the pursuit of deliciousness, offering specialties such as Kawara Soba (wheat noodles served in a hotpot broth), Mikan Hotpot, and Soba-tan. A collection that won the Soul Connection Award at the Asahi Awards Expo 2025. It's the only place in Hokkaido where you can enjoy Kawara Soba!

[Tel]0123-25-6970 [Addr]104-2 Izarigawa, Eniwa [Parking]Available [Hours]11:00-14:00 / 18:00-22:00 (Tue-Sat; dinner by reservation only) / 11:00-14:00 (Sun) [Closed]Mon

### PICK OUT 10 Classic-Style Ramen That Brings Back Memories Eniwa Oton Shokudo

The signature dish, Kobato Ramen, features a clear soy-sauce-based chicken broth topped with chashu pork, bamboo shoots, green onions, spinach, and a soft-boiled egg—all served with thin, curly noodles. Its nostalgic flavor has made it a longtime favorite among locals.



[Tel]0123-32-2251 [Addr]13 Izarigawa, Eniwa [Parking]Available [Hours]11:00-15:00 [Closed]Tue & occasional closures

## Bustling with Stylish Restaurants and cafe's Eniwa Station East Exit Area

### PICK OUT / 01 A Popular Curry House Using Fresh Local Ingredients A-kitchen Curry House



Their flavorful European-style curry, rich with spices, comes highly recommended. The popular Omu Cheese Curry and Omu Cutlet Curry are made with Ki no Nagumi, a premium brand of eggs produced in Eniwa. A mild curry option for children is also available.

[Tel]0123-33-8844 [Addr]1-2-8 Kogane Chuo, Eniwa [Parking]Available  
[Hours]11:00-15:00 (Closes when curry roux runs out) [Closed]Mon

### PICK OUT / 02 Exquisite Gelato Made from Freshly Collected Local Milk Gelateria Gigi



A specialty Italian gelato shop that crafts colorful, seasonal flavors using freshly collected milk from Eniwa and perfectly paired local fruits and ingredients. Their gelato can be enjoyed year-round—and is also available for delivery across Japan.

[Tel]0123-21-9915 [Addr]2-19-8 Kogane Minami, Eniwa [Parking]Available  
For business hours and holidays, please check the store's official website or social media.

### PICK OUT / 03 Pizzeria e Trattoria CERVO

An authentic Italian restaurant recognized by the official Naples Pizza Association. CERVO proudly serves genuine Neapolitan-style pizza along with creative dishes made using carefully selected vegetables and seafood from Eniwa and across Hokkaido—flavors you can experience only here.



[Tel]0123-34-6301 [Addr]2-19-7 Kogane Minami, Eniwa [Parking]Available  
For business hours and holidays, please check the store's official website or social media.

### PICK OUT / 05 Eniwa Furusato Park



Located just a short walk from JR Eniwa Station, this peaceful park was renewed in 2022 with the addition of a cafe and new playground equipment. During the summer, a gentle stream flows through the lush greenery, creating a refreshing atmosphere. At the center of the park, a fountain and the soft scent of herbs bring a sense of calm and relaxation.

[Addr]4-2 Kogane Chuo, Eniwa [Parking]Available

### PICK OUT / 04 Bakery Kyara Liaison



A bakery that uses 100% Hokkaido-grown wheat and no additives, offering bread that's gentle on the body and full of natural flavor.

[Tel]0123-25-3339 [Addr]1-17-22 Kogane Minami, Eniwa [Parking]Available  
[Hours]9:00-15:00 [Closed]Mon / 1st & 3rd Sun

### PICK OUT / 06 PARK IN CAFÉ SOURIRE



A cozy café where you can enjoy soup curry made with locally grown Eniwa vegetables as well as a variety of Japanese and Western sweets and morning dishes—all while taking in the relaxing view of the park. True to its name, it's a place filled with warmth and cheerful smiles.

[Tel]050-5884-9710 [Addr]Eniwa Furusato Park, 4-2 Kogane Chuo, Eniwa [Parking]Available  
[Hours]9:00-13:00 (Apr-Oct; Sun & holidays -19:00) / 10:00-15:00 (Nov-Mar; Sun 13:00-15:00)  
[Closed]Tue & every other Wed (Apr-Oct) / Tue & Wed (Nov-Mar) / regular holidays

### PICK OUT / 07 imoimo ~Baked Sweet Potato & Drink~



A mobile trailer that sells freshly roasted sweet potatoes and drinks. Each sweet potato is slowly baked to bring out a natural sweetness that tastes almost like dessert. Since the trailer often moves to different locations, check their Instagram to see where they'll be open next!

[Addr]4-10-2 Kogane Chuo, Eniwa [Parking]Available [Hours]10:00-18:00 (Closes when sold out) [Closed]Tue

### PICK OUT / 08 Mimosa Garden & Café La Liberté



A unique café that combines coffee x aroma x herbal medicine—a rare and intriguing mix. The café offers a wide variety of menu items, with its latte art being especially popular. It also carries aroma products and traditional herbal remedies.

[Tel]0123-25-8028 [Addr]4-11-16 Kogane Minami, Eniwa [Parking]Available [Hours]11:00-18:00 (LO 17:30) [Closed]Tue



### PICK OUT / 10 Café Midi Lune



A cozy café with a calm, wood-accented atmosphere. Enjoy handmade cakes and freshly brewed coffee, as well as pasta and curry dishes.

[Addr]3-10-16 Kogane Minami, Eniwa [Parking]Available  
[Hours]10:30-20:45 (Tue-Sat / 10:30-20:00 (Sun))  
[Closed]Mon & New Year holidays (Dec 31-Jan 3)

### PICK OUT / 09 Donuts Chaya Honwaka

Delicious donuts made with plenty of safe, high-quality Hokkaido wheat. Their gentle sweetness fills your mouth with a

[Tel]0123-25-5346 [Addr]7-18-4 Kogane Minami, Eniwa [Parking]Available [Hours]11:00-17:00 (Closes when sold out) [Closed]Irregular



## Indulge in Exquisite Gourmet Delights Wakakusa & Kashiwa Area

### PICK OUT / 01 Refined Craftsmanship, Creativity, and Hospitality Kaiseki Andantei



A kaiseki restaurant offering dishes infused with creativity and meticulous technique. Carefully selected ingredients are transformed into delicate, beautifully balanced cuisine that highlights their natural flavors. Guests can also enjoy a full kaiseki experience even during lunch.

[Tel]0123-34-0292 [Addr]3-11-5 Hakuyochi, Eniwa [Parking]Available  
[Hours]11:30-14:30 / 17:30-22:30 [Closed]Wed

### PICK OUT / 03 Connecting Hearts Through Sweets ICHIE Flower & Sweets



Born from the wish to help people cherish life's everyday celebrations, ICHIE promotes the joy of "giving sweets" as a way to share happiness. The pâtissier, who honed their craft in France, creates exquisite confections that bring smiles to you and your loved ones.



[Tel]0120-022-412 [Addr]3-1-6 Kashiwagicho, Eniwa [Parking]Available [Hours]10:00-19:00 (LO 18:00) [Closed]Tue

### PICK OUT / 05 Flower Studio Living Colours



Offering fresh flowers, preserved arrangements, and custom-made wedding bouquets, Living Colours also hosts flower design classes for all skill levels.

[Tel]0123-33-7088 [Addr]2-1-3 Misakino, Eniwa [Parking]Available [Hours]10:00-17:00 [Closed]Sat-Sun & public holidays

### PICK OUT / 02 A Local Fish Shop Offering Fresh Seafood and Processed Delicacies Eniwa Takahashi



A neighborhood fish shop known for its exceptionally fresh seafood, sourced from both within and outside Hokkaido. Enjoy high-quality sashimi made from carefully selected fish, or ask for a custom-made platter prepared to your preferences. The shop also offers a wide variety of processed seafood products.

[Tel]0123-33-6213 [Addr]4-1-1 Anakecho, Eniwa [Parking]Available  
[Hours]11:00-19:00 [Closed]Mon

### PICK OUT / 04 Savor Hokkaido's Mountain and Ocean Delicacies in a Flavorful Kamameshi Seasonal "Kamameshi" Dishes ICHIE



Enjoy kamameshi—a traditional rice dish cooked in an iron pot—made with the finest seasonal ingredients from Hokkaido. The restaurant also offers lunch and banquet menus. With private rooms featuring sunken seating and large banquet halls, Ichie can accommodate both small gatherings and larger parties.

[Tel]0120-026-151 [Addr]3-2-2 Kashiwagicho, Eniwa [Parking]Available [Hours]Lunch: 11:00-14:00 (Mon, Wed-Fri) / 11:00-14:30 (Sat-Sun & Holidays) Dinner: 17:00-20:30 (Mon, Wed-Fri) / 17:00-21:00 (Sat-Sun & Holidays) [Closed]Tue

### PICK OUT / 06 Discover a New Flavor With Every Visit CAFE&GELATO LicoLico Eniwa Main Store



A handmade gelato shop that uses fresh Hokkaido milk along with seasonal local fruits and vegetables. The café also serves sandwiches and light lunches, and includes a dog-friendly café and an indoor dog run.

[Tel]0123-39-5577 [Addr]2-26-18 Kita Kashiwagicho, Eniwa [Parking]Available [Hours]12:00-18:00 (Summer) / 10:00-17:00 (Winter) [Closed]Open daily

### PICK OUT / 07 Konayuki Tonton Eniwa Store



Konayuki Tonton pork is raised at Ecorin Village, nurtured by nature and fresh air. This rare, free-range pork—produced using one of the few open-grazing methods in the world—is served here as exquisite tonkatsu. Experience the tenderness and juiciness of this exceptional natural pork.

[Tel]070-2425-1110  
[Addr]4-8-33 Kashiwagicho, Eniwa [Parking]Available  
[Hours]11:00-20:00 (LO 19:30)  
[Closed]New Year holidays (Dec 31-Jan 3)



### PICK OUT / 09 Moizari River Seseragi Waterway

As part of the "Hometown River Model Project," the riverbed was restored with natural soil and stones, and willows were planted along the banks to create a gentle, scenic flow. In early summer, delicate water crowfoot flowers bloom gracefully in the clear stream.

[Addr]Saiwaicho - Kashiwagicho, Eniwa [Parking]Available (Saiwai Park)



### PICK OUT / 10 Saiwai Park

Take a relaxing stroll along the lush Moizari River while enjoying the seasonal beauty of flowers such as water buttercup, lavender, and cockscomb blooming in the clear waters.

[Addr]2-chome Saiwaicho, Eniwa [Parking]Available [Facilities]Restrooms closed during winter (Nov-Mar)



### PICK OUT / 08 Kokoro Bakery Smile

A beloved bakery known for its fluffy, perfectly baked bread made from carefully crafted dough using Hokkaido butter and wheat.

[Tel]0123-32-1630 [Addr]3-1-19 Hakuyochi, Eniwa [Parking]Available  
[Hours]9:00-18:00 (Closes when bread is sold out) [Closed]Sun & Mon



### PICK OUT / 11 NOODLE BAR 9

Serving rich, flavorful ramen made with house-made noodles. In the evening, enjoy drinks in a relaxed bar atmosphere.

[Tel]0123-21-9979 [Addr]2-2-20 Omachi, Eniwa [Parking]Available [Hours]11:00-15:00 (Tue-Thu) / 11:00-15:00 / 18:00-23:00 (Fri-Sun) [Closed]Mon

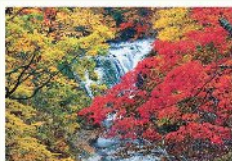
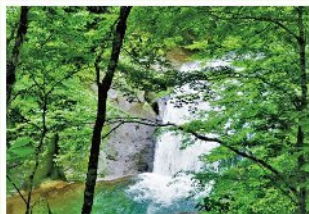


## Find Serenity in the Abundance of water and Forests Banjiri & Makiba Area

### PICK OUT 01 Hakusen Falls

Hakusen Falls, standing 15 meters high and 18 meters wide, was named for its elegant form resembling an open white fan. In autumn, as the surrounding trees turn vibrant shades of red and yellow, the waterfall's white stream stands out even more vividly—an awe-inspiring work of nature's art.

[Tel] 0123-33-3131  
[Addr] Banjiri, Eniwa  
[Parking] Available  
[Facilities] Restrooms closed during winter (Nov 4-Apr 28)



### PICK OUT 02 Rarumanai Falls

The water of Rarumanai Falls glides gently along the riverbed, flowing naturally over the rocks without resistance. Its graceful form evokes the refined beauty of a traditional Japanese garden.

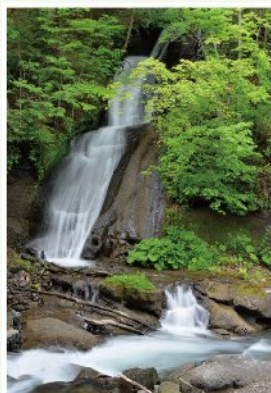
[Tel] 0123-33-3131 [Addr] Banjiri, Eniwa [Parking] Available  
[Facilities] Restrooms open year-round



### PICK OUT 03 Sandan Falls

Named for its three-tiered cascading white streams. Deep in the nearby valley known as Kuma-no-sawa, legend says that the hidden treasures of the warrior Minamoto no Yoshitsune lie buried.

[Tel] 0123-33-3131  
[Addr] Banjiri, Eniwa  
[Parking] None (400 m / 6 min on foot from Rarumanai Falls parking lot)



### PICK OUT 04 Furusato Forest Park



Covering a vast area of 37.8 hectares, this park features athletic playgrounds for children and nature observation trails.

[Tel] 0123-33-0401 [Addr] Banjiri, Eniwa  
[Facilities] 9:00-17:00 (Apr 29-Nov 3)  
[Parking] Available



### PICK OUT 05 Izarigawa Dam

Constructed to maintain the flow of the Izarigawa River—the largest tributary of the Chitose River in the Ishikari River system—Izarigawa Dam is a multipurpose reservoir that supports daily life in Eniwa. The man-made lake offers a variety of scenic views throughout the four seasons.

[Tel] 0123-33-7107 [Addr] Izardaira, Eniwa  
[Parking] Available [Facilities] 8:30-17:15

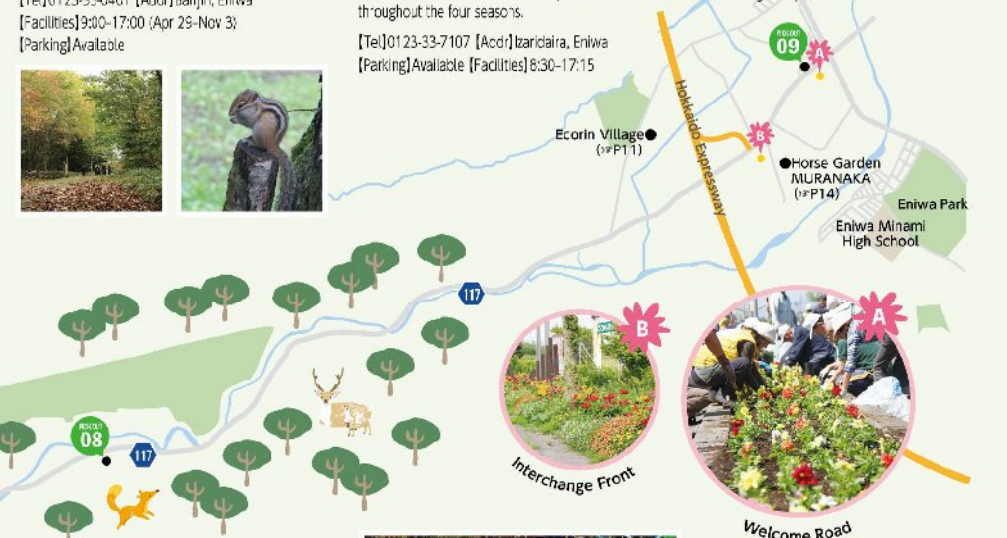


### PICK OUT 06 Lake Eniwa Open Recreation Area



Spreading out below the Izarigawa Dam, this 30,000 m² grassy field offers a relaxing outdoor space surrounded by cherry, birch, and maple trees. Benches, gazebos, and barbecue pits are available, making it an ideal spot for picnics and day camping.

[Tel] 0123-33-3131 [Addr] Banjiri, Eniwa  
[Parking] Available [Facilities] 9:00-17:00 (Apr 29-Nov 3; No overnight stays)



### PICK OUT 07 Lake Eniwa Sakura Park



In 1982, about 3,000 Eniwa citizens planted nearly 1,000 cherry trees to create a place of relaxation around Lake Eniwa. Every May, the park bursts into full bloom, attracting many visitors who come to enjoy the spectacular cherry blossoms.

[Tel] 0123-33-3131 [Addr] Banjiri, Eniwa [Parking] Available  
[Facilities] Until sunset (Apr 29-Nov 3; No open fires)



### PICK OUT 08 Campers Area Eniwa TCS Village

If you want to enjoy a relaxing camping experience with family and friends surrounded by Eniwa's beautiful nature, this is the place to be! From free tent sites and camping trailers to outdoor saunas, TCS Village offers a variety of ways to enjoy the great outdoors. Create unforgettable memories in the heart of Hokkaido's wilderness.

[Tel] 090-8273-7937 (10:00-17:00) [Addr] 307-1 Banjiri, Eniwa  
[Parking] Available [Hours] 11:00-18:00 (Reservation required; please check the official website for details) [Closed] Irregular holidays (Operations in Mar-Apr may vary depending on snow conditions)



### PICK OUT 09 A Hidden Gem Café in a Quiet Neighborhood Café de Vale

A cozy café loved by women for its carefully crafted, homemade dishes. The one-plate lunch made with fresh vegetables is especially recommended.

[Tel] 090-6696-7989 [Addr] 12-11-8 Misakino, Eniwa  
[Parking] Available [Hours] 11:00-16:00  
[Closed] Sun & Mon

## Discover Hidden Gem cafe's and Shops Toiso & Enami Area

### PICK OUT / 01 A Small Neighborhood Pastry Shop consan



A cozy little pastry shop tucked away in a quiet residential area. Using carefully selected ingredients from Hokkaido, consan offers a delightful range of sweets—from classic favorites like shortcakes and Mont Blancs to limited seasonal creations, all lovingly handmade. Their popular shortcake, featuring fluffy sponge and rich Hokkaido fresh cream, is especially beloved for its gentle, comforting flavor.

[Tel]0123-29-5658  
[Addr]5-14-7 Wakocho, Eniwa  
[Parking]Available [Hours]10:00-18:00  
[Closed]Tue & Wed

### PICK OUT / 02 A Slow Café Surrounded by Nature Cafe Fukuza



A café nestled along the peaceful Yukamboshi River, where wild birds gather. Enjoy carefully selected coffee and dishes made with thoughtfully chosen ingredients and handmade tableware. The café also features imported wooden furniture from Bali, unique foreign sundries, and one-of-a-kind pieces crafted by local artists.

[Tel]0123-32-0293 [Addr]6-12 Enami, Eniwa  
[Parking]Available [Hours]10:00-17:00 (Mon  
-16:00) [Closed]1st Mon of each month



### PICK OUT / 03 Homemade Fresh Mozzarella & Pizza Milk Atelier Terada Farm



A restaurant directly operated by the farm. The cheese, made from rich, high-milk fat fresh milk, is exceptionally creamy with a delicate sweetness and smooth texture—perfectly complementing the freshly baked pizza dough.

[Tel]0123-39-2546 [Addr]28 Enami, Eniwa  
[Parking]Available [Hours]11:00-16:00 (LO 15:30)  
[Closed]Wed

### PICK OUT / 04 Creative Breads Inspired by the Art of Pastry Baker's Terrace 689



A bakery where a former pastry chef creates delicate breads and sweets infused with creative ideas inspired by cake-making. The eat-in space also offers popular parfaits.

[Tel]0123-33-1970 [Addr]6-89 Enami, Eniwa  
[Parking]Available (5 spaces)  
[Hours]9:30-18:00 (Closes when sold out) / Café:  
10:00-16:00 (LO 15:30)  
[Closed]Sun & Mon



### PICK OUT / 07 Garden Restaurant Valhalla



Enjoy the exquisite taste of beer, featuring Sapporo Classic as the highlight brew. The restaurant's specialty is Jingsukan (grilled mutton), complemented by a variety of appetizers that pair perfectly with your drink.

[Tel]0123-33-740 [Addr]542-1 Toiso, Eniwa (inside Sapporo Beer Hokkaido Brewery) [Parking]Available  
[Hours]11:00-21:00 (Jun-Sep; LO 20:30) / 11:00-20:00 (Oct-May; LO 19:30) [Closed]Tue & New Year holidays

### PICK OUT / 05 Handmade Sweets Amai Aozora



A cozy shop loved for its carefully handcrafted baked goods and house-roasted coffee. The Haskap Cookies, made with homegrown naskap berries, are especially popular and make for the perfect souvenir.

[Tel]0123-25-8844 [Addr]5-20-10 Wakocho, Eniwa [Parking]None  
[Hours]10:00-18:00 [Closed]Tue

### PICK OUT / 06 Tofuya Mame Teppō Main Store

This tofu specialty shop takes pride in using 100% Hokkaido-grown soybeans and a unique, artisanal production method. The result is a silky-smooth yose tofu that melts in your mouth the moment you taste it. Alongside freshly made tofu, visitors can enjoy a variety of popular items such as freshly fried soy milk donuts and tofu hamburger steaks.



[Tel]080-3916-5700  
[Addr]201-18 Toiso, Eniwa (Yamaguchi Foods Co., Ltd.)  
[Parking]Available [Hours]10:00-17:00  
[Closed]New Year holidays



### PICK OUT / 08 Sapporo Beer Hokkaido Brewery <Sapporo Classic Tour>



Nestled in the vast lands of Hokkaido, this brewery offers guided tours where visitors can observe the production process of Sapporo Classic and enjoy beer tasting. The site also features the Guest Shop, where original Sapporo Beer goods are available, and the Restaurant Valhalla.

[Tel]0123-32-5802 (10:00-17:00) [Addr]542-1 Toiso, Eniwa  
[Parking]Available [Tour Times]10:30, 11:00, 13:30, 14:00, 15:00  
(Reservation required) [Closed]Mon & Tue (the following days if public holidays) / New Year holidays / Occasional closures



# For a Relaxing Stay in Eniwa



## Fairfield by Marriott Hokkaido Eniwa

Your Base for Exploring Eniwa  
Connected to Flower Road Eniwa

Part of the Trip Base Roadside Station Project developed by Marriott International and Sekisui House, this hotel offers a simple yet comfortable space to relax. Based on the concept of "Quest for the Unknown Japan," it serves as an ideal base for your journey through Eniwa and beyond.

[Tel] 0123-29-5250

[Addr] 828-9 Minami 5h-mamatsu, Eniwa

[Parking] Available [Payment] Cash / Credit Cards

[Reservation] Required [Check-in] 15:00 [Check-out] 11:00

[WEB] <https://www.marriott.co.jp/hotels/travel/ctse-fairfield-hokkaido-eniwa/>



## Eniwa Station Hotel

A Business Hotel Next to JR Eniwa Station,  
Featuring Authentic Japanese-Style Rooms

A 46-room business hotel conveniently located right next to JR Eniwa Station. In addition to single and twin Western-style rooms, the hotel also offers authentic Japanese-style rooms.



[Tel] 0123-34-2400 [Addr] 2-5 Kogane Chuo, Eniwa

[Parking] Available [Payment] Cash / Credit Card / QR Code Payment

[Reservation] Required [Check-in] 15:00 [Check-out] 10:00

[WEB] <http://www.esth.jp/>



## Eniwa Business Hotel SG

A Convenient Business Hotel  
in the Heart of Eniwa

Offering a range of rooms from single to family types, this business hotel provides accommodations to suit various travel needs.

[Tel] 0123-33-5611 [Addr] 111-1 Izumimachi, Eniwa

[Parking] Reservation required (limited spaces)

[Payment] Cash / Credit Cards / E-payment

[Reservation] Required [Check-in] 16:00 (until 22:00)

[Check-out] 10:00 [WEB] <http://hotel.sg.com/index.html/>



## Eniwa Onsen La Forêt

A Natural Moor Hot Spring Rich  
in Chloride Minerals with an Auto Lōlyy Sauna

This natural moor hot spring, abundant in sodium ions, gently warms your body from the core. Visitors can enjoy two types of saunas, including one equipped with an auto lōlyy system, as well as a relaxing lounge stocked with over 2,200 manga and an on-site restaurant.



[Tel] 0123-32-4171 [Addr] 4- Enami, Eniwa [Parking] Available

[Opening Hours] 11:00-23:00 (last admission 22:20)

[Holiday] New Year's Day / Maintenance days

[WEB] <https://eniwa-onsen.com/>



## Piece Eniwa

A Smart Self-Service Hotel  
with Contactless Check-In

A convenient unmanned hotel offering a comfortable and effortless stay. With tablet-based smart check-in, guests can complete procedures quickly and easily. Ideally located within walking distance of convenience stores.



[Tel] 0120-949-484

[Addr] 12-3-10 Midorimachi, Eniwa [Parking] None

[Payment] Advance payment required [Reservation] Required

[Check-in] 15:00 [Check-out] 10:00



## Kashiwagi Recreation Facility

A Free Campground  
Perfect for Day Camping and Barbecues!

Known as one of Eniwa's best spots for autumn foliage, this recreation area attracts many visitors during the fall season. Advance reservation required.



[Tel] 0123-29-4836

[Addr] 3-672 Kiza Kashiwagicho, Eniwa [Parking] Available

[Season] Mid-May-Sep 30 [Opening Hours] 13:00-11:00 the next day

[Charge] Free [Rental] None [Luggage Transportation] Handcart available

[WEB] <http://www.eniwa-clu.jp/kashiwagi.html/>



## Eniwa Onsen Honoka

A Natural Moor Hot Spring  
with Two Types of Stone Saunas

This natural moor hot spring, also known as "the beauty bath," is rich in minerals that promote blood circulation and help relax the muscles. Guests can enjoy two types of stone saunas — Bijido and Yujido — each offering a unique healing experience. A campground is also located on the premises. (p.12)



[Tel] 0123-32-2615

[Addr] 397-2 Toiso, Eniwa [Parking] Available

[Opening Hours] 9:00-24:00 (last admission 23:30) [Holiday] None

[WEB] <https://yudokoro-honoka.jp/eniwa/>

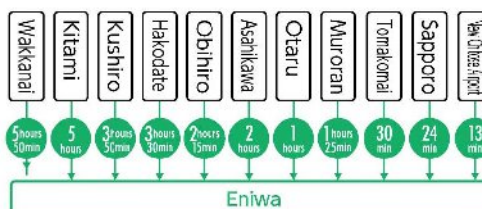


# Access to Eniwa

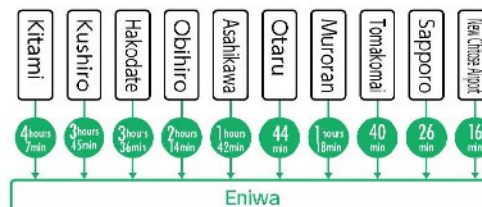
## By Air



## JR Lines



## By Car



※Travel Time Between Expressway Interchanges in Each City

## By Taxi

Chitose Kotsu TEL. 0123-26-6700  
Shimamatsu Hire TEL. 0120-972-309  
Fuji Kotsu TEL. 0123-32-2161

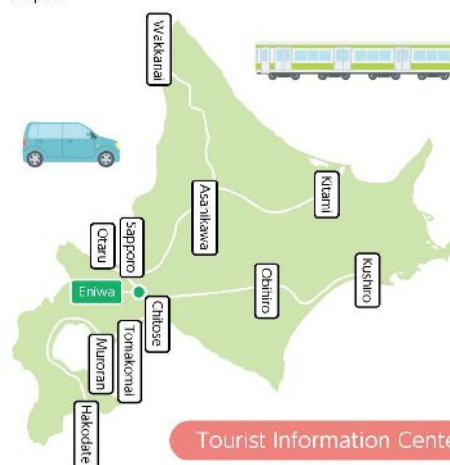
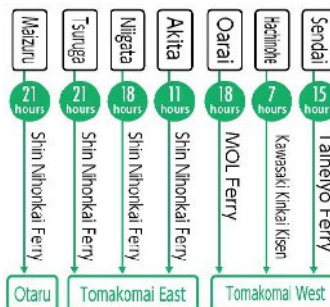
## City Bus "Ecobus"

A community bus that circulates widely around the city, with Eniwa Station as its center. It's a convenient way to get around for sightseeing within the city.

Eniwa Community Bus Search



## By Sea



## Tourist Information Center

### Hanafuru Bicycle Rental



In addition to information on sightseeing and events in Eniwa, brochures introducing nearby cities and Hokkaido's garden facilities are also available.

Tourist Information Center Website

[Tel] 0123-21-8900  
[Addr] 828-3 Minami Shimamatsu, Eniwa  
(Inside Flower Base Haguro Center House)  
[Hours] 9:00-17:00  
[Closed] Wednesdays (Nov-Mar) / New Year holidays

